



# Yankee Tole Crier

*The Official Newsletter of the Yankee Heritage Tole Chapter*

*An Affiliated Chapter of the Society of Decorative Painters*

Volume 45, Issue 3

www.yankeeheritagetolechapter.com

Dec 2008-Jan 2009

## Chapter Chatter

First, I want to congratulate Marilyn and her committee for organizing a great Installation Meeting. The decorations were beautiful, the food was delicious, the prizes were great and the afternoon program was enjoyable and stress-free. You all did a fantastic job.

Congratulations to Barbara Phenix, winner of the raffle for the Lynne Andrews lamp. And, thanks to all of you who supported the raffle this year.

New England Traditions was a busy and fun filled week for everyone who attended. YHT did a phenomenal job with its Country Store sales this year, netting \$1,200.00. My heartfelt thanks to all of you who painted and donated to make the sale such a success. Please see the article in this issue about the NET Art Show winners.

For those of you wishing to take part in the incentive program, the sign up sheet and activities sheet (which includes the pricing of the NET Country Store items) are contained in this newsletter. If any of you have questions, please get in touch with me.

The three workshops chosen by the membership at the September meeting are the Gail Anderson design on a lidded basket which was painted by Barbara Rolla which will be held on May 2, 2009; the Maureen McNaughton design on a mirror frame which was painted by Ann Marchese which will be held on July 25, 2009; and the watercolor lighthouse scene designed and painted by Beverly Weymouth which will be held on August 9, 2009.

Thank you to each and every one of you for making my three years as YHT's president a very rewarding experience. It was my honor to be "at the helm" of such a dedicated group of painters, and women. You are the ones who make Yankee the very special Chapter it is.

Happy holidays and Merry Christmas to everyone.

Jean McKay

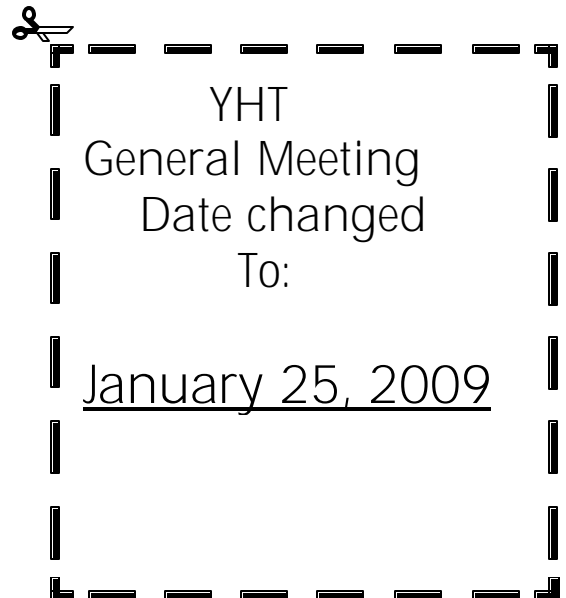
### What's inside

- 2- Officers/Board/Committee
- 3- Secretary's Report
- 4- Treasurer
- 5- General Meeting w/Linda McClure sign up
- 6- Incentive Program
- 7- 1st Vice President Note/Dumpster Diva Winner
- 8- Incentive Forms
- 9- Dumpster Diva /Sunshine/Membership Update
- 10- 2009 3-day seminar
- 11- 2009 Workshops
- 12- Barbara Rolla Workshop Sign up
- 13- Ann Marchese Workshop Sign up
- 14- Bev Weymouth Workshop Sign up
- 15- Code of Ethics/NET Art Show Winners
- 16- Personal Column/Scholarship/Upcoming Events

- 18- Membership form/Webpage/Newsletter
- 19- SDP Form

### Advertisers:

- 16- Decorative Artistry Workshop
- 17- Teachers Showcase



## Minutes of the General Meeting – November 16, 2008

Called to order: 10:06 a.m.

*Hospitality - Barbara Rolla.* Guests and new members were introduced.

*Secretary- Mary St.Pierre.* Minutes were amended and motion made to accept the amended September 2008 minutes made by Jo Madden, seconded by Gail Berinato. Motion carried.

*President - Jean McKay.* For 2009 NET YHT's jobs will be Theme Development and Country Store. YHT made \$1,200 from 2008 Country Store after the 20% fee to NET. Maryalis Bushee will take part in NET Class Selections. A motion was made to drop reimbursement for mileage for volunteers attending meetings and it was seconded, the motion carried with 4 members opposed. The \$50 seminar charge has been in place for many years. There is a need to raise the seminar price or not include lunch, or both. These changes will be discussed and voted on at later meetings.

*First Vice President – Grace Markauskas* March 2009 for Friday, March 13 the teacher will be May Phillips with a specially designed watercolor lighthouse. Saturday, March 14 will be hot air balloons with whales taught by Lauré Paillex. Sunday, March 15 is another specifically designed piece for YHT taught by Cynthia Erekson. All projects were on display.

*Treasurer – Jeani Kahl.* Checking - \$1370.06 Savings -\$7238.77 with a total of \$8,608.83

*Membership Secretary - Kathy Slawsky.* Anyone requesting a membership list can email her [laursky@aol.com](mailto:laursky@aol.com). Kathy reminded us that membership renewals are now due. Any renewals sent in after January 1<sup>st</sup> will have a late charge of \$5 added.

*Newsletter Editor - Mary St.Pierre.* Deadline for the newsletter articles is Friday, November 21, 2008.

*Newsletter Assistant - Chris Watson.* Total cost of printing and mailing was \$196.55 for 120 newsletters.

*Audit –* A committee of Kathy Slawsky, Jane Stone Tatro, Sue Miller and Karen Bazinet will be called to form the audit committee with Treasurer Jeani Kahl.

### Standing and Other Committees

*Angel Boxes- Joyce Roy.* Absent An assistant chaplain from Women's and Infants Hospital, Karen Hodges, thanked the chapter our donation of Angel boxes. She explained what went into the boxes and how they were used by the Neo Natal staff.

*Dumpster Diva - Sue Leuci.* Sue thanked everyone who participated in the 2008 Dumpster Diva contest. Judy Revelas was crowned Dumpster Diva for 2008.

Fundraising- Chris Watson. The Westborough Fair was November 8, 2008. She thanked the people who donated and/or helped at the Westborough Fair. The Fair netted \$263.50 after the \$90 booth fee. The remaining items will be sold at Susan Leuci's Holiday House December 5, 6, and 7.

Fundraising – Jean McKay. The year-long raffle of Lynne Andrews' lamp was won by Barbara Phenix.

*Incentive - Jean McKay.* 2008 Incentive forms are yellow and were available. Forms are to be sent to Jean by December 15, 2008.

*Meeting Raffle - Barbara Rolla.* Winner of the meeting raffle donated Kathy Slawsky was Madonna Boronski. The raffle brought in \$122.

*Secret Pal- Mary St.Pierre.* Secret Pals were revealed and new secret pals were chosen.

*Sunshine-Kathy Slawsky.* A card was sent to the family of Pat Shute who died in October and to Jo Madden whose brother passed away.

*Workshops & Paint-Ins - Jean McKay* The workshops for 2009 are Barbara Rolla May 2 - Ann Marchese July 25 and Bev Weymouth August 8. The winning projects were on display with sign up forms available.

### Special Committees and Positions

*NECC Rep., Grace Markauskas, Alternate-Judy Revelas.* The upcoming themes are: for 2010 – My Painting Room and for 2011 – Mountains of Color. Pat Flanagan explained the NET and NECC meetings being combined to reduce chapter representation to one person.

### Awards and Recognition

NET 2008 Art Show winners, (available in newsletter)

Recognition of Officers, Board and Committee Chairs with a presentation of gifts and charms.

Maddy Rheame Award to Lynne Andrews.

Chapter Achievement Award to Grace Markauskas

New Membership Award to Lynne Andrews

Dumpster Diva to Judy Revelas

Installation Ceremony for the 2009 officers was performed by Linda McClure followed.

Adjourned at 11:30 a.m.

**YANKEE HERITAGE TOLE CHAPTER - TREASURER'S REPORT**

	Beginning 9/2/08 Ending 10/31/08	YTD	2008 Budget
<b>INCOME</b>	\$	\$	\$
Membership Dues	505	1050	2025
Seminars		1945.3	5500
Sunday Program & Workshops	863	1854.5	1400
Newsletter Advertising & Showcase	99.15	254.15	445
Fundraising	420	575	1200
Raffles - General Meeting	120	336	1000
Donation			120
Yankee Trader	30	618.36	1000
- Sales Tax	0	31.47	
Interest - Savings	2.59	23.29	20
Miscellaneous (Tole Gate)		15	270
NET - Shares			2000
NET - Country Store		23.09	
Lunch - General meeting	201	551.5	2850
<b>TOTAL</b>	2240.74	7277.66	\$17,830.00
<b>DISBURSEMENTS</b>	\$	\$	\$
Printing		204.73	50
Postage	8.2	27.96	50
Office Supplies		29.07	70
Yankee Trader	81	538.52	250
-Sales Tax		31.47	
Newsletter - Postage	91.2	307.5	400
- Printing	105.35	471.17	800
Seminars		2921.06	5500
Rents - General Meeting/Workshop	250	2090	3250
Sunday Programs	225.4	1421.47	1400
Workshop & Paint-Ins - Teacher Fees /Supplies	0	444.33	625
Lunch	224.25	680.55	2850
Donations - DAC			100
Dolly Lancaster Art Award		500	500
Historian			75
Library		17.7	75
National Convention - Officer		129	500
Teacher Gifts	24	54	150
Sunshine			50
President Gift			100
Miscellaneous	247.94	446.19	100
Chapter Awards			300
SDP Insurance & dues		36.6	160
NET - Country Store		3.15	150
NECC Dues	100	100	100
Web Page			100
Angel Boxes		282.96	125
<b>TOTAL</b>	1357.34	10737.43	\$17,830.00
<b>BEGINNING BALANCE 9/2/08</b>	\$	\$7,725.43	<b>ACCOUNT RECONCILIATION</b>
Income		2240.74	Checking
Disbursements		-1357.34	Savings
<b>ENDING BALANCE</b>	\$	\$8,608.83	<b>TOTAL</b>
			1370.06
			7238.77
			8608.83

YANKEE HERITAGE TOLE CHAPTER  
Presents an Afternoon Program with Linda McClure

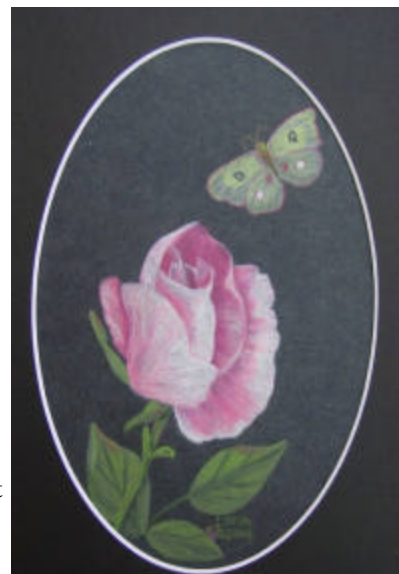
**January 25, 2009**

**Time & Place: 1:00 to 5:00 p.m. at Knights of Columbus,  
17 Willow Street, Westborough, MA 01581**

We will be using watercolor pencils to do Linda's design "Signs of Summer" on an 8x10 black multimedia artboard. The pencils used are Derwent Watercolor and the colors needed are Black #67, Copper Beech #61, Crimson Lake #20 and Grass Green #47 (basic set) and Cedar Green #50 and Chinese White #72. You will also need a pencil sharpener, paper towels, tracing paper, water container, and acrylic brushes (at least a small flat or filbert and a liner). Pencils can be ordered through YHT, see below. Thank you to Linda for sharing her project with us.

Any questions, please contact Barbara Rolla at 413/967-5444 or by e-mail at [brolla@verizon.net](mailto:brolla@verizon.net).

*Keep the top portion of this form*



---

**Lunch will be beef stew with salad and rolls.**

Afternoon Program with Linda McClure, **January 25, 2009**

**(Deadline for registration is December 29, 2008 if you want a surface and pencils)**

Please return this form if you plan to attend the meeting whether or not you will be painting.

Name: \_\_\_\_\_ E-mail: \_\_\_\_\_

Address: \_\_\_\_\_

Phone: \_\_\_\_\_

**Sunday, January 25, 2009**

I \_\_\_ will \_\_\_ will not attend the General Meeting at 10:00 a.m.

I \_\_\_ will \_\_\_ will not attend the afternoon program with Linda McClure

No. of Guests: \_\_\_ attending the meeting -- write the name(s) of your guest(s) on the back of this sign-up sheet.

I am enclosing \$10.00 for each person attending the afternoon program \$ \_\_\_\_\_

I am enclosing \$5.00 for each surface \$ \_\_\_\_\_

I am enclosing \$4.00 for a full set of 6 watercolor pencils \$ \_\_\_\_\_

I am enclosing \$1.30 for only the 2 extra pencils (if you have the basic set of 4) \$ \_\_\_\_\_

I am enclosing \$7.50 for each lunch ordered \$ \_\_\_\_\_

Total \$ \_\_\_\_\_

**Make checks payable to YHT and mail to Barbara Rolla, 4 Woodland Heights, Ware, MA 01082.**

**Lunch will be beef stew with salad and rolls.**

## 2008 Incentive Program

To participate, see the activities below. Please complete the form and mail by December 15, 2008 to: Jean McKay, 29F Cork Circle, Millville, MA 01529

**RATE OF COMPENSATION:** Every 10 points will earn \$1 of *Yankee Rewards*

### NET AND NECC AT YANKEE HERITAGE LEVEL

NET Liaison: 15 points per NET meeting attended

NECC Representative and Alternate: 15 points per NECC meeting attended

YHT Chair for Traditions Country Store: 60 points

Class Selections: 15 points

Hosting a paint-in for Country Store: 40 points

Volunteer Coordinator: 50 points

Donations of Painted Items for Traditions Country Store: 2 points per \$1 of sales value

Volunteering at NET Venues: 10 points per hour

### NET ACTIVITIES AT NET LEVEL

Hospitality Chair: 75 points

Raffles Chair: 100 points

### YHT OFFICERS AND BOARD

President: 150 points

1<sup>st</sup> VP: 275 points

2<sup>nd</sup> VP: 50 points

Secretary: 150 points

Treasurer: 150 points

Membership Secretary: 80 points

Board Members: 15 points per meeting attended

### COMMITTEES CHAIRS & MEMBERS

Advertising: 85 points

Audit: 10 points

Community Service: 50 points

Fund Raising: 50 points

Hospitality: 20 points

Library: 50 points

Newsletter Editor: 120 points

New Product Evaluator: 40 points

Ornament Swap: 30 points

Publicity: 50 points

Secret Pal: 50 points

Standing Rules: 40 points

Tri-fold: 20 points

Workshops & Paint-Ins: 200 points

Yankee Trader: 30 points per meeting presented

Angel Boxes: 75 points

Budget: 50 points

Dumpster Diva: 40 points

Historian: 50 points

Incentive: 75 points

Meeting Raffles: 50 points

Newsletter Assistant: 40 points

Nominating: 50 points

Parliamentarian: 40 points

Scholarship: 75 points

Show Share & Tell: 40 points

Sunshine: 30 points

Website: 40 points

### ACTIVITIES

Attending a general meeting: 10 points

Attending 3-day seminar: 10 points per day (Friday & Saturday)

Attending a workshop: 10 points

Attending a paint-in: 20 points each

Donating a painted item for the year-long raffle: 50 points

Donating a painted item for fund raising: 2 points per \$1 of sales value

Donating a door prize: 10 points

Housing out-of-town participants in Chapter activities: 30 points per person per night

Painting an Angel Box: 10 points

Painting centerpiece for YHT events: 30 points

Painting a NET Traditions Country Store Item: 2 points per \$1 of sales value

Recruiting a new YHT Member: 15 points when new member's dues are paid

Teaching or Demonstrating at a Chapter event when receiving no teaching fee: 75 points

### 2008 Country Store Items and Prices

Canvas Tote Bags \$20	Ghost Shelf Sitters \$5	Gingerbread pins \$3
Dog Bone Box \$7	Frog Pins \$1	Pumpkin Placque \$15
Candle Hugs \$5	4 Season Sconce set \$45	Ghost Pins \$4
Raggedy Ann Shelf Sitters \$10	Note Holders \$12	Fall Harvest Wreath \$6
Pillows \$10	Pumpkin Patch Circle \$1	Stylus \$3
Pear with Sheep \$6	Cookbook Bags \$15	Red canvas Purse \$5
Bookmarks \$1	Watercolor framed Rose \$25	American Placque \$12
Sled with Snowman \$8	Mini Suitcase \$7	Napkin Basket \$12
Domino Pins \$15	Painted Domino Necklaces \$15	Pumpkin Windchime \$10
Stamped Domino Necklaces \$5		

To participate, see the activities below. Please complete the form and mail by December 15, 2008 to:  
Jean McKay, 29F Cork Circle, Millville, MA 01529

**RATE OF COMPENSATION:** Every 10 points will earn \$1 of *Yankee Rewards*

#### 1<sup>st</sup> Vice President Report:

At the January meeting we will be having Linda McClure doing a project in watercolor pencils. Sign-up sheets are in this newsletter.

Please sign-up before the deadline if you want the surface and the watercolor pencils; because supplies must be ordered and we need shipping time to get them here.

March will be a really great weekend with our seminar teachers, May Phillips, Laure Paillex and Cynthia Erikson. The sign-up sheets are included in the newsletter.

Maria Grimanis will be teaching at the June meeting. We do not have the project selected at this time, but will have all the information for the next newsletter.

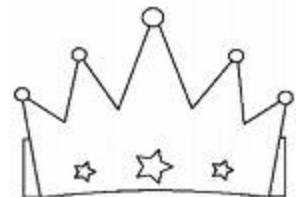
Mary Kingslan Gibilisco will be doing our March, 2010 seminar. I will have more information at the next meeting along with photographs.

Please cooperate with me and respond before the deadlines. Together we can make this go smoothly.

Thank you. Barbara Rolla

The Dumpster Diva for 2008 was **Judy Revelas**. She will be receiving her \$50 Diva Bucks for being chosen by the chapter members. Everyone is encouraged to try your hand at turning trash to treasure for the 2009 Dumpster Diva. Forms are available on the website.

Members can email their before picture along with the form to:  
Sue Leuci at: [sleuci@charter.net](mailto:sleuci@charter.net)



2008 YANKEE HERITAGE TOLE CHAPTER INCENTIVE PROGRAM FORM

NAME: \_\_\_\_\_

YEAR LONG ACTIVITIES :

\_\_\_\_\_  
**YEAR LONG TOTAL**

JANUARY ACTIVITIES :

\_\_\_\_\_  
**JAN. TOTAL**

FEBRUARY ACTIVITIES:

\_\_\_\_\_  
**FEB. TOTAL**

MARCH ACTIVITIES:

\_\_\_\_\_  
**MAR. TOTAL**

APRIL ACTIVITIES:

\_\_\_\_\_  
**APR. TOTAL**

MAY ACTIVITIES:

\_\_\_\_\_  
**MAY TOTAL**

JUNE ACTIVITIES:

\_\_\_\_\_  
**JUNE TOTAL**

JULY ACTIVITIES:

\_\_\_\_\_  
**JULY TOTAL**

**AUGUST ACTIVITIES:**

**AUG. TOTAL**

**SEPTEMBER ACTIVITIES:**

**SEPT. TOTAL**

**OCTOBER ACTIVITIES:**

**OCT. TOTAL**

**NOVEMBER ACTIVITIES:**

**NOV. TOTAL**

**DECEMBER ACTIVITIES:**

**DEC. TOTAL**

**GRAND TOTAL 2008**

**Mail this form by December 15, 2008 to:**

**Jean McKay  
29F Cork Circle**

The Dumpster Diva for 2008 was **Judy Revelas**. She will be receiving her \$50 Diva Bucks for being chosen by the chapter members. Everyone is encouraged to try your hand at turning rashes to treasure for the 2009 Dumpster Diva. Forms are available on the website. Members can email their before picture along with the form to Sue Leuci at: [sleuci@charter.net](mailto:sleuci@charter.net)

**Sunshine:** A sympathy card was sent to Jo Madden for the loss of her brother.

A sympathy card was also sent to the family of Pat Shute. Pat was a past member of YHT and passed away in October.

**Membership**

**Annual renewals are due now. You must be a member of SDP to be a chapter member. Please send YHT membership renewals to: Kathy Slawsky 12 Kendall Drive, Westborough, MA 01581**

**Renewals postmarked after January 1st will require an additional \$5 late fee before processing.**

**Yankee Heritage Tole Chapter  
2009 Three Day Seminar  
w/ May Phillips, Laure Paillex and Cynthia Erikson  
March 13, 14 and 15 2009**

**Time: 9:00 to 5:00 p.m. on Friday and Saturday and Sunday for our afternoon program**

**Friday, March 13, 2009 with May Phillips:** We are thrilled to have May Phillips with us for the first day of our seminar weekend, March 13. May is an excellent teacher, you won't want to miss this opportunity to paint with her. May will be teaching a watercolor designed especially for us—a light house. All levels of painters are welcome. All paint and w/c paper will be supplied as she likes to work with what she is familiar with.

**Saturday, March 14, 2009 with Lauré Paillex:** Join us for a wonderful day of painting with Laure. She will be teaching "Save the Whales". This project will be painted in acrylic, on a panel that inserts into "shelf" frame. The panel measures 17.5 x 11.5. All levels welcome.

**Sunday, March 15, 2009 with Cynthia Erikson:** The surface is a frame with oval cut out and back panel. We will faux finish the frame and learn the "50/50" techniques that she is known for. Her design (Pig-Quail arm) uses stencils to basecoat with freehand embellishment to finish. Stencils are custom cut and can be purchased separately. Supplies needed: stencil brushes, Rubber Wood Graining Comb and regular painting supplies. ( For beginner and experienced painters.)

**KEEP THE TOP PORTION OF THIS FORM**

**Seminar with May Phillips, Laure Paillex and Cynthia Erikson, March 13, 14 and 15 '09**

(Deadline for registration is March 1, 2009)

Name: \_\_\_\_\_ Street: \_\_\_\_\_  
 City: \_\_\_\_\_ State \_\_\_\_\_ Zip Code \_\_\_\_\_  
 Phone: \_\_\_\_\_ E-mail \_\_\_\_\_

**Friday, March 13 '09— Water color Light House with May Phillips**

Included is \$50.00 for class Amount \$ \_\_\_\_\_  
 I am enclosing \$10 for paint and w/c paper supplies \_\_\_\_\_

**Saturday March 14 '09—Acrylics with Laure Paillex**

I am enclosing \$50.00 for class \_\_\_\_\_  
 I am enclosing \$15.00 for with each Shelf Frame w/panel \_\_\_\_\_

**Sunday-General Meeting, March 15 '09—afternoon program with Cynthia Erikson**

\_\_\_\_\_ will \_\_\_\_\_ will not attend the general meeting at 10:00 a.m.,  
 \_\_\_\_\_ will \_\_\_\_\_ will not attend the afternoon program with Cynthia Erikson  
 Number of guests: \_\_\_\_\_ will attend the meeting \_\_\_\_\_ will attend the program  
 Please write the name(s) of your guest(s) on the back of the sign up sheet.

I am enclosing \$15.00 for each person attending the afternoon program \_\_\_\_\_  
 I am enclosing \$11.95 for each frame with oval insert \_\_\_\_\_  
 I am enclosing \$7.50 for each lunch ordered \_\_\_\_\_

**TOTAL** \_\_\_\_\_

Make checks payable to YHT and mail to Barbara Rolla, 4 Woodland Heights, Ware, MA 01082-9756



## 2009 Workshops

**Time:** 10:00 a.m. to 5:00 p.m.

**Location:** Quaker Inn & Conference Center  
442 Quaker Highway (Route 146A)  
Uxbridge, MA  
1-888-355-7200 or 1-508-278-2445

Workshop with Barbara Rolla  
Teaching a Gail Anderson's "Old World Floral" in acrylics  
May 2, 2009



Workshop with Ann Marchese  
Teaching a Maureen McNaughton's Strokework  
"Orchids" painted with acrylics  
July 25, 2009



Workshop with Bev Weymouth  
Her own design "Lighthouse from the Beach"  
Painted with watercolors  
August 8, 2009



YANKEE HERITAGE TOLE CHAPTER  
Presents Gail Anderson's Old World Floral  
A Workshop with **Barbara Rolla**  
May 2, 2009

**Time:** 10:00 a.m. to 5:00 p.m.

**Location:** Quaker Inn & Conference Center  
442 Quaker Highway (Route 146A)  
Uxbridge, MA  
1-888-355-7200 or 1-508-278-2445

We are pleased to offer this workshop with Barbara Rolla. She will be teaching Gail Anderson's Old World Floral -- which is painted with acrylics.

A line drawing, prep instructions, materials and paint list will be available prior to the workshop. You may purchase a surface from Barbara or bring your own. You may purchase a complete set of paints for the project. You must purchase a pattern packet for this workshop. Sign up by the deadline to insure that you will receive a surface.

**Food:** Coffee, tea and pastries will be provided. You may bring your lunch or purchase it from a nearby deli, coffee shop and/or McDonald's. Or, you may select and pay for a lunch from the deli menu during the morning and we'll pick it up at lunch time.

**Payment: Two (2) checks are required to sign up for this event.** One to YHT for \$10 to hold your space -- this check will be returned to you at the workshop if you attend -- and one to Barbara Rolla for the surface and/or paints and the packet.

Any questions contact: Jean McKay at 508/883-0886 or [jmckay1210@charter.net](mailto:jmckay1210@charter.net)

---

Workshop with Barbara Rolla, May 2, 2009

(Deadline for sign up is April 2, 2009) If you do not sign up by this deadline we cannot guarantee that you will receive the surface you have ordered.

Name \_\_\_\_\_

Mailing Address: \_\_\_\_\_

Phone: \_\_\_\_\_ E-Mail: \_\_\_\_\_

**I am enclosing \$10.00 payable to YHT**

**AND**

**There are two (2) surfaces to choose from:**

**Lidded Basket** \_\_\_\_ at \$19.00 each **Amount sent:** \_\_\_\_\_

**or**  
**Rectangular Box** \_\_\_\_ at \$12.00 each **Amount sent:** \_\_\_\_\_

**Packet:** \_\_\_\_ at \$3.00 each **Amount sent:** \_\_\_\_\_

**Complete Palette:** \_\_\_\_ at \$2.00 each **Amount sent:** \_\_\_\_\_

**Total Payable to Barbara Rolla** \$ \_\_\_\_\_

Mail **Both** Checks and sign up sheet to: Jean McKay, 29F Cork Circle, Millville, MA 01529

YANKEE HERITAGE TOLE CHAPTER  
Presents Maureen McNaughton's Strokework Orchids  
A Workshop with **Ann Marchese**  
July 25, 2009

**Time:** 10:00 a.m. to 5:00 p.m.

**Location:** Quaker Inn & Conference Center  
442 Quaker Highway (Route 146A)  
Uxbridge, MA  
1-888-355-7200 or 1-508-278-2445

We are pleased to offer this workshop with Ann Marchese. She will be teaching Maureen McNaughton's Strokework Orchids -- which is painted with acrylics.

A line drawing, prep instructions, materials and paints list be available prior to the workshop. You may purchase the surface from Ann or bring your own. You must purchase a pattern packet for this workshop. Sign up by the deadline to insure that you will receive a surface.

**Brushes:** Highly recommended are Maureen McNaughton's brushes in the following sizes: 2, 4, 6, 8, Toler 9, flat 12 and 14, liner and Mop 1 or 2. Please contact Jean McKay by June 1, 2009 if you want to order any of these brushes.

**Food:** Coffee, tea and pastries will be provided. You may bring your lunch or purchase it nearby. Or, you may select and pay for a lunch from the deli menu and we'll pick it up.

**Payment:** **Two (2) checks are required to sign up for this event.** One to YHT for \$10 to hold your space -- this check will be returned to you at the workshop if you attend -- and one to Ann Marchese for the surface and/or the packet.

Any questions contact: Jean McKay at 508/883-0886 or [jmckay1210@charter.net](mailto:jmckay1210@charter.net)

---

Workshop with Ann Marchese, July 25, 2009

(Deadline for sign up is June 25, 2009) If you do not sign up by this deadline we cannot guarantee that you will receive the surface you have ordered

Name \_\_\_\_\_

Mailing Address: \_\_\_\_\_

Phone: \_\_\_\_\_ E-Mail: \_\_\_\_\_

**I am enclosing \$10.00 payable to YHT**

**AND**

**Wooden Mirror:** \_\_\_\_ at \$35.00 each **Amount sent:** \_\_\_\_\_

**Packet:** \_\_\_\_ at \$8.00 each **Amount sent:** \_\_\_\_\_

**Total Payable to Ann Marchese** \$ \_\_\_\_\_

Mail **Both** Checks and sign up sheet to: Jean McKay, 29F Cork Circle, Millville, MA 01529

YANKEE HERITAGE TOLE CHAPTER  
Presents "Lighthouse from the Beach"  
A Workshop with **Bev Weymouth**  
August 8, 2009

**Time:** 10:00 a.m. to 5:00 p.m.

**Location:** Quaker Inn & Conference Center  
442 Quaker Highway (Route 146A)  
Uxbridge, MA  
1-888-355-7200 or 1-508-278-2445

We are pleased to offer this workshop with Bev Weymouth. She will be teaching her design "Lighthouse from the Beach" -- a waterfront scene which is painted with watercolors.

**Paints and Surface:** Paint and watercolor paper will be provided and you will need to purchase the pattern packet from Bev for this workshop.

**Supplies to bring:** Watercolor/acrylic brushes -- rounds in sizes 00, 2, 4, 5; a liner; flats in sizes 4, 5 and ¾" or 1"; a few old rounds in sizes 2 4 and 5 (not fluffy ones). **And** a kneaded eraser, graphite stick, non-wax transfer paper (as Chaco); pencil, ruler, red ball point pen, old toothbrush, 2 water containers; plastic palette, paper towels, foam core (or MDF or cardboard covered with wrap so it's non-porous) about 16"x20", masking tape and a hair dryer.

**Food:** Coffee, tea and pastries will be provided. You may bring your lunch or purchase it from a nearby deli, coffee shop and/or McDonald's. Or, you may select and pay for a lunch from the deli menu during the morning and we'll pick it up at lunch time.

**Payment:** **Two (2) checks are required to sign up for this event.** One to YHT for \$10 to hold your space -- this check will be returned to you at the workshop if you attend -- and one to Bev Weymouth.

Any questions contact: Jean McKay at 508/883-0886 or [jmckay1210@charter.net](mailto:jmckay1210@charter.net)

---

Workshop with Bev Weymouth, August 8, 2009  
(Deadline for sign up is July 8, 2009)

Name \_\_\_\_\_

Mailing Address: \_\_\_\_\_

Phone: \_\_\_\_\_ E-Mail: \_\_\_\_\_

**I am enclosing \$10.00 payable to YHT**

And

I am enclosing **\$8.00** payable to **Bev Weymouth**

Mail **Both** Checks and sign up sheet to: Jean McKay, 29F Cork Circle, Millville, MA 01529

## YHT's NET 2008 ART SHOW WINNERS

Congratulations to these members who won ribbons at the New England Traditions 2008 Art Show. All of you who plan to attend the January 2009 meeting please bring your piece and your ribbon for Show, Share and Tell. We all want to see them.

### Hobbyist

People's Choice – Milanka Reardon for her People entry  
First Place Hobbyist Division – Milanka Reardon for her People entry  
First Place in People Category – Milanka Reardon  
First Place in Holiday Category – Bea Tanner  
Second Place in Still Life Category – Milanka Reardon  
Third Place Land/Sea Scape Category – Pat Flanagan  
Third Place Floral Category – Gloria Woodwell  
Third Place Still Life Category – Gloria Woodwell

### Professional

Second Place Professional Division – Nancy Mullen for her Floral entry  
Third Place Professional Division – Cindy Cleary for her Strokework entry  
First Place in Floral Category – Nancy Mullen  
First Place in Strokework Category – Cindy Cleary  
Second Place in Holiday Category – Chris Watson  
Second Place in Still Life Category – Sylvia Ball

# Code of Ethics for Chapters of the Society of Decorative Painters

As members of a chapter of the Society of

Decorative Painters, our purpose, in common with that of the Society, is the promotion of decorative painting. To this end we pledge ourselves to support the goals and purposes of the chapter and the Society and:

**To** keep the lines of communication open with fellow chapter and Society members, respecting one another and following appropriate lines of communication.

**To** have a positive and open attitude, listening to fellow members' opinions.

**To** remember the importance of an active membership, contributing our time and talents.

**To** maintain high standards of integrity and honesty.

**To** respect the rights of each member individually, and the right of the majority to govern; therefore supporting the decision of the majority, regardless of how we personally voted.

**To** support and cooperate with leaders who serve the chapter, respecting the time and dedicated service of past leaders, and when completing our terms as officers, relinquishing our responsibilities cheerfully to support new leaders.

**To** promote a friendly chapter environment where chapter members motivate and inspire one another, and where differences of opinion are accepted without a need to continue to discuss past differences.

**To accept and respect the varied reasons members have for chapter membership and the varied skill levels they represent.**

**To** remember the chapter is not a business and should not be used either to promote any specific individual or business or to create business for itself, thus competing with members who are in business.

**To** realize the conduct and activities for the chapter and its members reflect on the entire Society of which the chapter is a part.

As a member of the chapter and of the Society, we acknowledge this code of ethics as an expression of our determination to maintain high professional standards. It is only the conscience of the individual who subscribes to this code that can guarantee its effectiveness.

## Personals Column

Thank you so very much to my secret pal, Barbara Rolla. You were so thoughtful and caring in choosing special items for me. You even remembered Disney for me! The card was perfect, it touched my heart and made me smile. Thank you, Mary St.Pierre

**Anyone participating in SECRET PAL—I need your secret pal for my files.**  
**You can email me your secret pal.** [nasi@net1plus.com](mailto:nasi@net1plus.com) Thanks Mary St.Pierre



## Scholarship Applications Now Available

January marks the start of the next scholarship round to select our 2008 Dolly Lancaster Art Award winner. Chapter members are encouraged to pick up a scholarship application at either the January or March chapter meeting and deliver it to your local high school. Scholarship applications can also be downloaded from our chapter's website: [www.yankeetolechapter.com](http://www.yankeetolechapter.com)

All scholarship applications are due back to Susan Leuci, this year's scholarship chair, by April 1<sup>st</sup>. You can contact Susan at [sleuci@charter.net](mailto:sleuci@charter.net) for additional information.

### Yankee's Upcoming Events

- January 10, 2009** Board Meeting at Kathy Slawsky 10:30 a.m.
- January 25, 2009** – General Meeting and afternoon program with Linda McClure
- March 13, 2009** – Full Day Seminar with May Phillips
- March 14, 2009** – Full Day Seminar with Lauré Paillex
- March 15, 2009** – General Meeting and half day seminar with Cynthia Erekson
- May 2, 2009** – Workshop with Barbara Rolla
- June 28, 2009** – General Meeting and afternoon program with Maria Grimanis
- July 25, 2009** – Workshop with Ann Marchese
- August 8, 2009** – Workshop with Bev Weymouth
- September 20, 2009** – General Meeting and afternoon program with Pat Flanagan
- October 6 through 11, 2009** – New England Traditions convention
- November 15, 2009** – General Meeting and Installation Program
- March 19, 20 and 21, 2010** – Seminar with Mary Kingslan Gibilisco

**Decorative Artistry**  
presents a  
**One Day Self-Publishing Workshop**  
**Saturday, January 10, 2009**  
**10 a.m. – 3 p.m.**  
**Cumberland Library**  
**Cumberland, Rhode Island**

Join Jeanne Paglio & Goals Guru Dr. Paula Scully for an interesting and informative workshop on self-publishing and what it entails.

If you have written pattern packets, a how-to instructional book, a novel or any other work you want published; you will find the answers to the following questions as well as others:  
Where do I go now and how do I get there?

This is an interactive workshop, so bring your questions and find the answers.

To find out more, go to:  
**[www.DecorativeArtistry.us](http://www.DecorativeArtistry.us)**

# Teachers Showcase

Lynne Andrews  
Folk Art  
Artist/ Designer/ Author/ Teacher  
181 Tourtellot Hill Rd.  
Chepachet, RI 02814  
andrews181@cox.net  
www.lynneandrews.com

*Maureen J Baker*  
Artist Designer Teacher  
[www.tolebyrn.com](http://www.tolebyrn.com) website  
[maureenjbaker@msn.com](mailto:maureenjbaker@msn.com) email  
978 256 5949 phone  
Classes Commissions Seminars

*Mary McLean Art Studio*  
Original Designs ★ Classes ★ Seminars

*Mary McLean, CDA*  
8 Sharon Avenue  
Norfolk, MA 02056  
(p) 508-384-7191  
[mcleanmdl@aol.com](mailto:mcleanmdl@aol.com)



*Sue Miller, CDA*  
(Member National Society of Decorative Painters)

CUSTOM ORDERS  
▲  
SPECIAL WORKSHOPS  
ART CLASSES  
BEGINNER TO ADVANCED  
OILS, ACRYLICS, PEN & INK  
▲  
ART SUPPLIES, CANVAS  
WOOD SURFACES, PORCELAIN  
BOOKS, AND PATTERN PACKETS

*Sue's Decorative Art Studio*  
2 Oak Street  
Wareham, MA 02571

(508) 295-0171

**Timeless Treasures**  
Barbara Rolla  
4 Woodland Heights  
Ware, MA 01082  
Decorative Painting Classes  
Supplies Wood Cutting  
Hand Painted Items  
Tel. 413-967-3444  
e-mail [brolla@verizon.net](mailto:brolla@verizon.net)



401-766-7949

*JoyceAnn*

Decorative Arts

Classes Supplies  
Beginner, Intermediate, Advanced  
Oils-Acrylics-Watercolors



Decorative Artist, Teacher and Designer

*Tole Sampler*

Mary Svenson, CDA

E-mail: [tolesampler@comcast.net](mailto:tolesampler@comcast.net) 978-692-3261  
[www.tolesampler.com](http://www.tolesampler.com) 24 Buckboard Drive  
Westford, MA 01886



**The Creative Touch**

Exclusive designs / classes / seminars

48 Paquin Drive, Marlborough, MA 01752  
Phone & Fax: 508 485 9306  
email: [creativetouch@earthlink.net](mailto:creativetouch@earthlink.net)  
[www.thecreativetouch.com](http://www.thecreativetouch.com)  
Anne Hunter, owner

**LAURIE'S**

Art Learning Center  
&  
Studio

•  
Artwork

Art Supplies

•  
Classes

•  
17C Railroad Ave.

Westerly, RI 02891

(401) 596-5969

[laurie@lauriesartstudio.com](mailto:laurie@lauriesartstudio.com)

[www.lauriesartstudio.com](http://www.lauriesartstudio.com)

HAVE YOU VISITED YHT'S WEB-SITE?

Go to [www.yankeeheritagetolechapter.com](http://www.yankeeheritagetolechapter.com) and find out what's happening. There are color photos of all our upcoming workshops and seminars. See photos of past happenings. Do you have some great digital photos of YHT events? Send them to our webmaster, Mary St. Pierre at [nasi@net1plus.com](mailto:nasi@net1plus.com).

### Newsletter Information

The *Yankee Tole Crier* is published 5 times a year. *The newsletter deadline is 12:00 noon the Friday following the General Meeting.*

The newsletter will be placed together THAT Saturday. All material is to be emailed and/or submitted on diskette with a hard copy of the report. Photos should be of quality that they can be copied for clarity of a copy from the copy of the original photo. Any problems with the printing and mailing of the newsletter should be directed to Newsletter Editorial Assistant Chris Watson. She can be contacted via email:

[handpaintedheart@hotmail.com](mailto:handpaintedheart@hotmail.com)  
Mary St.Pierre Editor, Yankee Tole Crier  
[nasi@net1plus.com](mailto:nasi@net1plus.com)

## Yankee Heritage Tole Chapter Membership Form

Name: \_\_\_\_\_ SDP Membership #: \_\_\_\_\_

Street \_\_\_\_\_ City \_\_\_\_\_

State \_\_\_\_ Zip \_\_\_\_\_ Home phone \_\_\_\_\_ Business phone \_\_\_\_\_

e-mail address \_\_\_\_\_

Circle All that apply:    New Member    Renewal    Shop Owner    Teacher    Student

Referred to YHT by \_\_\_\_\_  
(name of YHT member)

Do you want your address and phone to be listed in the YHT Directory: \_\_\_\_yes\_\_\_\_no  
If you want to have your shop listed, please fill in the following:

Shop Name: \_\_\_\_\_

Address: \_\_\_\_\_

I would like to receive my newsletter as follows, check one:

By hard copy via US postal service \_\_\_\_\_

By e-mail notification that the newsletter is available on YHT's website \_\_\_\_\_

**Annual Membership Dues: \$20.00**

**Renewal dues are due by October 1 for the next calendar year. Renewals postmarked January 1 or later require an additional \$5.00 late fee.**

Send this form and a check made out to YHT to:  
Kathy Slawsky, 12 Kendall Drive, Westborough, MA 01581

**NOTE: You must be a member of SDP to become a member of Yankee Heritage Tole Chapter. Please send SDP dues directly to SDP's National Office. You may be required to show your SDP membership card and/or your YHT membership card at YHT events and program.**



# Society of Decorative Painters

## 2009 MEMBERSHIP FORM

### 1 MEMBER PROFILE *Please print name and address as it should appear on the mailing label.*

Name \_\_\_\_\_ Membership no. (if renewal) \_\_\_\_\_  
 \*Household Member Name (if purchasing a Household Membership) \_\_\_\_\_ Membership no. (if renewal) \_\_\_\_\_  
 Business Name (if joining as a Business Member) \_\_\_\_\_  
 Mailing Address \_\_\_\_\_ City \_\_\_\_\_  
 State \_\_\_\_\_ Postal Code \_\_\_\_\_ Country \_\_\_\_\_  
 Email \_\_\_\_\_ Website \_\_\_\_\_  
 Phone ( ) \_\_\_\_\_ Fax ( ) \_\_\_\_\_

- I am a member of at least one SDP chapter.  I am not a member of a chapter but wish to receive information about chapters in my area.  
 I would like to give \$1 to SDP Foundation, which provides scholarships to members, funds the Treasure Boxes for Kids program, and supports other SDP initiatives.  
 I would like to give \$\_\_\_\_\_ to SDP Foundation, which provides scholarships to members, funds the Treasure Boxes for Kids program, and supports other SDP initiatives.

### 2 MEMBERSHIP CATEGORIES (CHECK ONE, PLEASE)

Mark this box if you wish to pay for 2010 membership also.

#### U.S.

- \$40 Individual (\$45 after 12/1/08)  
 \$70 Business (\$75 after 12/1/08)

#### INTERNATIONAL & CANADA (U.S. FUNDS)

- \$70 Individual (\$75 after 12/1/08)  
 \$40 Online Individual\*\*  
 \$100 Business (\$105 after 12/1/08)  
 \$70 Online Business\*\*

*The higher international rate reflects postage costs, not an increase in dues.*

#### ANY COUNTRY (U.S. FUNDS)

- \$20 Household\*

\* Household Membership is for an additional member sharing the same address as an Individual or Business member.

\*\* Online memberships: You will receive the magazine online only. If selecting this option, no printed *Decorative Painter* will be mailed to you.

## IMPORTANT

- Membership year is Jan. 1 to Dec. 31, 2009.
- Dues postmarked after Dec. 1, 2008 require an additional \$5 postage and handling fee. This does not apply to those who were not a member in 2007 and 2008.

### 3 BUSINESS & TEACHER DIRECTORY RESOURCE CATEGORIES (OPTIONAL)

#### BUSINESS MEMBERS ONLY

**Business Members**, check all boxes that apply for the 2009 *Business & Teacher Directory*. Listings and *B&T Directory* are **free** with your business membership. Visit SDP's website, [www.decorativepainters.org](http://www.decorativepainters.org), to submit a fifty-word description of your business and to submit subcategories associated with your business. These additional subcategories and descriptions will be added only to the *B&T Directory Online Resource*. You must join or renew by Dec. 1, 2008, in order to be listed in the printed version of the 2009 *Business & Teacher Directory*. Those who join or renew after Dec. 1 will be added to the *B&T Directory Online Resource* only.

- Author  
 Distributor/Wholesaler  
 Home Studio  
 Manufacturer/Importer  
 Publisher  
 Retailer  
 Teacher  
 Travel-teacher  
 Other

#### (OPTIONAL)

#### INDIVIDUAL MEMBERS ONLY

**Individual Members**, check all boxes that apply. Listings are \$10 each per year.

- Author  
 Teacher  
 Travel-teacher  
 Design and/or painting skills for hire

The 2009 *Business & Teacher Directory* will be available for sale in spring of 2009. Check the box in the next section to preorder your copy.

### 4 BUSINESS & TEACHER DIRECTORY PREORDER OPTION (OPTIONAL)

- Free for Business Members (all countries)  
 \$12 • Directory price for U.S. Individual Members  
 \$20 • Directory price outside the U.S. (U.S. funds)

To be included (based on the categories you checked above), you must renew your membership by Dec. 1, 2008. Copies will be mailed in spring 2009.

### 5 PAYMENT

Make checks payable to: SDP, 393 N. McLean Blvd., Wichita, KS 67203-5968. • For faster service, use MasterCard or VISA and call (316) 269-9300 ext. 105, or fax application to (316) 269-9191 • Join online at [www.decorativepainters.org](http://www.decorativepainters.org).

**Note:** SDP serves its members by providing information and communications via email. These communications include, but are not limited to, e-zines such as *Chapter Happenings* newsletter, informational e-blast, and notification of contests and promotions from SDP Business Members. If you would prefer not to receive newsletters and other communications, please do not provide your email address.

Total \_\_\_\_\_

- VISA  MasterCard Exp. date \_\_\_\_\_ Phone \_\_\_\_\_  
 Card number \_\_\_\_\_ Signature \_\_\_\_\_  
 This is a Gift Membership from \_\_\_\_\_ Memb. no. \_\_\_\_\_

**DUES POSTMARKED AFTER DEC. 1, 2008, REQUIRE AN ADDITIONAL \$5 POSTAGE/HANDLING FEE (DOES NOT APPLY TO NEW MEMBERS).**

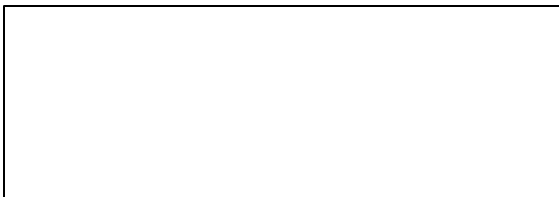
**MEETING/ACTIVITY CANCELLATION POLICY**

To see whether or not a Yankee Heritage activity has been cancelled due to weather (or for some other reason) – check our website at [www.yankeeheritagechapter.com](http://www.yankeeheritagechapter.com). The latest time that we will post this cancellation is 8:30 a.m. on the day of the activity. If you do not have access to the internet, please call a friend who does or call Grace Markauskas at 978-685-3744.

**Directions to the meeting**

John Boyle O’Rielly Council No.85  
17 Willow Street, Westorouh, Ma 01581  
From Masspike to I-495 North(go Left)  
I-495(from either direction)  
Exit 23B – Westboro  
Right onto Route 9 West(worcester)  
Right onto Route 30 West  
(also known as East Main Street)  
Go past CVS/McDonalds  
Just before the overhead Railroad Bridge,  
Turn right onto Willow Street.

Be sure to check specific locations for any seminars, workshops or paint ins you might be attending. We are using different locations for some of our activities.



***Things to bring to the meeting***

1. \$\$ for Shirts, Cookbooks, etc. at the Yankee Trader.
2. Ads, Reports & Information for the Newsletter.
3. Community Service Project:
4. Donate a door prize (for a future meeting)
5. Guest(s) to introduce to YHT
6. Items to Show/Share/Tell
7. Local Papers for Publicity
8. Painted name tag
9. Supplies for Sunday Afternoon Program
10. Video & Book return for the library
11. YHT Membership Renewal Form

***Your Yankee Spirit !!!***

**Quaker Inn & Conference Center**

442 Quaker Highway  
Route 146A, Uxbridge, Ma 01569  
Phone: 1888-355-7200 or  
508-278-2445 [www.Quaker-Inn.com](http://www.Quaker-Inn.com)

**Directions:**

**FROM North:** Rt 146 South from Mass Pike and Worcester to Rt 146A, Chockalog Rd. Uxbridge exit. Turn left At end of exit. At intersection turn right Onto Rt 146A South. Quaker Inn & Conference Center is ¼ mile on left.

**FROM South:** Rt 146 North from Providence to RT 146A, Uxbridge/ Smithfield Exit. Turn left onto Rt 146A North. Quaker Inn & Conference Center Is 1 ½ miles on the right



Mary St. Pierre  
YHT Newsletter Editor  
45 Fairbanks Ct.  
Douglas, MA 01516