



Yankee Tole Crier

www.yankeeheritagetolechapter.com

*The Official Newsletter of the Yankee Heritage Toile Chapter
An Affiliated Chapter of the Society of Decorative Painters*

2009, Issue # 5

Editor: nasi@net1plus.com

December 2009–Jan2010

Presidential Chapter Chatter...

Fall is definitely here and I love the autumn colors—fall foliage is my favorite palette! If you missed our installation meeting you missed a great time. Ann did a wonderful job—thank you Ann.

The year is coming to an end and NET 2009 has come and gone. It seemed like a roller coaster ride with ups and downs but the ride was fun! Thank you to everyone who volunteered—our members always jump in and help in all areas—our sister chapters can always count on us! YHT's NET assignments for 2010 will be the Art Show and Move-in/Move-out. Nancy Mullen and her mother Sylvia Ball will co-chair the Art Show, Lola Nagle will be our Move-in/Move-out chair and Cheryl Krilovich will be our Class Selection person. We still need a volunteer to represent us at the NECC/NET meetings. Also, thanks to everyone who participated in 2009 meetings, paint-ins, seminars and workshops.

We have a very busy year ahead of us with lots of exciting events. In this newsletter you will find a complete list. So, mark your calendars—you won't want to miss any of the fun.

As the new year approaches consider inviting friends to our meetings. I not only would love to see our chapter grow but I truly want to introduce others to our art form. There is such vast knowledge, experience and generosity out there with painters—let's share it with friends. Remember, the board is always open to suggestions for activities, afternoon programs, chapter improvements, etc. Just let one of us know what is on your mind.

With the most beautiful season of the year approaching, I would like to wish you and yours a Happy Holiday Season and a Joyous New Year!

Happy painting—See you in 2010! - Grace

1st Vice President's Corner...

1st Vice President Report:

Don't forget to mark the dates for our upcoming events.

A big **THANK YOU** to Ann Marchese for doing such a great job with the banquet.

Mary McLean will be teaching on Jan. 17, 2010. The project will be with the DecoArt Traditions acrylic paints, which work a lot like oils. This will be a perfect time for you to try these paints. They will be provided for the project. Please sign up as soon as possible. I have the prep instructions and line drawing so that you can prepare your surface.

Mary Kingslan Gibilisco will be doing our March, 2010 seminar. A sign-up sheet is in this newsletter. The projects will be painted in oils. Please sign up, as soon as possible for this seminar. We will be opening it up to other chapters so that they will be able to join us. We want to make it very successful. Think of bringing a friend to join you for a great weekend of painting with Mary.

Joan Wilding is going to be teaching at the Sept. 19, 2010 meeting. We will have the project and the sign-up sheet at the Jan. meeting.

Sandy Scales (an accredited Maureen McNaughton teacher) will be coming to our chapter March, 2011. She will be teaching on Friday and Saturday. Nancy Mullen will be teaching the Sunday afternoon program.

Kim Hogue will be teaching a pattern she is designing for us in January, 2011.

Thank you for supporting your chapter.
Barbara Rolla

What's Inside...

2. Officers & Board
Cancellation Policy
3. Treasurer's Report
4. Secretary's Report
5. Fundraising
6. Freedom/Secret Pal
7. Chapter Happenings
 - Sunshine*
 - Membership*
 - Knit one...*
 - Community Service*
 - Angel Box*
 - Dumpster Diva*
8. Jan Mary McLean
9. Workshop Mary McLean
10. Teachers Showcase
11. Workshop Lynne Andrews
12. Nov Recipes
13. 2010 Seminar
14. NECC/NET
15. DAC/SDP
16. NET Art awards
17. Workshop Chris Watson
18. SDP Membership
19. YHT Membership

YHT 2009 Calendar

Jan. 9—Board Meeting at Jo -Anne Naugler
Jan. 17—General Meeting/afternoon with Mary McLean, CDA
Jan. 23—NECC/NET meeting/ Westboro
Feb. 6—NET Class Selection
Feb. 13—Workshop with Mary McLean, CDA
March 13—Board Meeting
March 19 & 20—Seminar with Mary Gibilisco
March 21 - General Meeting/afternoon program w/Mary Kingslan.Gibilisco
March 27—NECC/NET meeting/ Westboro
April 24—NECC/NET meeting/ Westboro
April 24—Workshop with Lynne Andrews
May 18-22—SDP Convention
June 5—Workshop with Chris Watson
June 5—NECC/NET meeting/ Westboro
June 19—Board Meeting at Cheryl Krilovich
June 27—General Meeting—surprise after noon program
August 21—NECC/NET meeting/ Westboro
Sept. 11—Board Meeting
Sept. 19—General Meeting/afternoon program w/Joan Wilding
Oct. 6-11—New England Traditions
Nov. 6—NECC/NET meeting/ Westboro
Nov. 13—Board Meeting
Nov. 21—General Meeting & Installa-

YHT Officers, Board, Positions & Committees

Meeting/Activity Cancellation Policy

To see whether or not a YHT activity has been cancelled due to weather (or other reason)-check our website at www.yankeeheritagetolechapter.com. This will be posted no later than 8:30 a.m. on the day of that activity. If you don't have access to the internet, please call a friend who does or call Grace Markauskas at 978-685-3744.

YHT Treasurer's Report—November 2009

	<u>9/1-11/1/2009</u>	<u>YTD 2009</u>	<u>2009 Budget</u>
<u>INCOME</u>			
Membership Dues	\$740.00	\$1,430.00	\$2,100.00
March Seminar	\$52.50	\$2,227.90	\$1,500.00
General Meetings (4)	\$552.00	\$1,652.95	\$1,700.00
Lunch	\$187.50	\$512.50	\$1,550.00
Newsletter Ads/Showcase		\$65.00	\$225.00
Funding Raising	\$60.00	\$1,001.09	\$1,300.00
General Mtg Raffles & Tole Gate	\$104.00	\$308.00	\$226.00
Donations	\$79.00	\$80.00	\$0.00
Yankee Trader	\$51.50	\$317.22	\$600.00
New England Traditions Shares			\$1,000.00
NET Country Store			\$750.00
Bank Interest	\$1.71	\$11.67	\$35.00
Workshops/Paint-Ins	\$22.75	\$102.75	\$0.00
Total Income	\$1,850.96	\$7,709.08	\$10,986.00
<u>DISBURSEMENTS</u>			
Newsletter copies and postage	\$114.00	\$594.61	\$1,100.00
March Seminar		\$2,634.07	\$3,135.00
Room rental - General meetings	\$250.00	\$750.00	\$1,250.00
Room rental - Workshops		\$475.00	\$375.00
Lunch	\$186.88	\$513.28	\$1,550.00
Yankee Trader	\$22.80	\$137.43	\$390.00
Dolly Lancaster Scholarship		\$500.00	\$500.00
SDP insurance and dues			\$121.00
General Meeting Costs	\$422.69	\$1,502.84	\$1,065.00
Workshop Costs	\$100.00	\$322.05	\$300.00
Sunshine		\$11.24	\$50.00
Webpage			\$75.00
Chapter awards and charms			\$250.00
Gift to President			\$50.00
SDP Attendance Officer Allow.		\$150.00	\$150.00
NET Country Store			\$150.00
Fundraising	\$25.44	\$86.54	\$150.00
Bereavement/Donations	\$70.00	\$105.00	\$0.00
General office costs			\$75.00
Historian			\$75.00
Library			\$75.00
Other		\$25.00	\$0.00
Total Disbursements	\$1,191.81	\$7,807.06	\$10,986.00
Beginning Balance 1/1/09		\$10,435.35	
Beginning Balance 9/1/09	\$9,678.22		
Plus Income	\$1,850.96	\$7,709.08	
Less Disbursements	<u>\$1,191.81</u>	<u>\$7,807.06</u>	
Ending Balance 11/1/09	\$10,337.37	\$10,337.37	
Balances 11/1/09	\$10,337.37		
Checking	\$5,334.49		
Savings	\$5,002.88		

YHT General Meeting Secretary's Report, November 15, '09...

Called to Order: 10:10 a.m.

Hospitality – *Pat Flanagan* welcomed three guests.

Secretary - *Mary St.Pierre*. Motion to accept September 2009 minutes made by, Jo Madden and seconded by Barbara Rolla. Motion carried.

President – *Grace Markauskas*. NECC/NET will start the process of transferring location for 2011. YHT was assigned two jobs – Move-in/Move-out chaired by Lola Nagle and the Art Show co-chaired by Nancy Mullen and Sylvia Ball. Cheryl Krilovich has volunteered to be part of the Class Selection committee.

First Vice President – *Barbara Rolla*. Mary McLean will teach using Traditions paint in January. June will be a mystery afternoon, and September will be Joan Wilding. The March seminar and meeting will be with Mary Gibilisco sign up sheets were available. Kim Hogue will be teaching in 2011.

Treasurer – *Jean McKay*. Checking - \$4,677.05 Savings -\$5,001.17 with a total of \$9,678.22. Chris Watson and Kathy Slawsky volunteered to be part of the audit committee. YHT holds two shares in NET and we received a check for 2008 in the amount of \$600.

Membership Secretary - *Kathy Slawsky*. Anyone requesting a membership list should email her at laur-sky@aol.com. There are currently 45 renewals for 2010

Standing and Other Committees

Historian – *LuAnn Klick* There was a photo album available for members to view.

Newsletter Editor - *Mary St.Pierre*. Deadline for the newsletter articles is Friday, November 20, 2009. If a reply is not sent to your email, it was not received. Newsletters of Sister Chapters of NECC are available for members to see.

Newsletter Assistant - *Chris Watson*. Total cost of printing and mailing 70 copies was \$114.

Angel Boxes- *Melissa Walsh*. Melissa thanked members who brought in finished Angel boxes. There were unfinished boxes for members to take. If a member cannot paint a box consider bringing in a box or a donation for future boxes are welcome.

Community Service – *Melissa Walsh*. Melissa thanked those who brought in items for comfort bags that are given to parents who have unexpected stays at the hospital with their child. The social workers have organized a clothing closet for patients who need clothing at discharge. During the winter months they are in need of jackets, boots, socks, sweatshirts and sweatpants. Gently used donations are appreciated.

Dumpster Diva - *Sue Leuci*. This will be Sue's last years as Dumpster Diva. The board will replace this with another adventure planned for next year. Jo Madden was crowned the 2009 Dumpster Diva.

Fundraising – *Jean McKay*. The NET's Country Store total was \$375. The chapter raffle for 2009 is a painted trunk donated by Barbara Rolla (a Cynthia Erikson design).

Paint for Freedom – *Jo Madden* thanked those who painted. The cards were displayed at NET Kathy Cross took some of them to presented to veterans by the Gold Star Mothers and the rest were presented back to the chapters to be distributed to veterans in our area. Some of the cards were painted by the local Girl Scouts. Kathy Slawsky has volunteered to take over the Paint for Freedom cards.

Secret Pal - *Mary St.Pierre*. Revealing of secret pals will take place after the meeting. Forms for 2010 are available.

Show,Share & Tell - *Grace Markauskas*. Chris Watson was chosen for show and tell.

Sunshine-*Kathy Slawsky*. Cards were sent to Cheryl Barb and Jo-Anne Naugler for their recent surgery. A card was sent to Linda Mandella for the loss of her husband.

Webmaster- *Mary St.Pierre*. The web page has been tweaked and will change more over the holidays.

Workshops & Paint-Ins - *Jean McKay*. The workshops chosen were: Mary McLean, tulips in oils scheduled for February 13, 2010 – Lynne Andrews for the snowman on a mitten to be held April 24 and Chris Watson for her folk art flag scheduled for June 5. At this time there is no definite place for the workshops. Jean is investigating places that would be less expensive for the chapter.

Volunteer Coordinator - *Maria Costantini, absent*. Judy Revelas thanked everyone who volunteered their time for the Country Store.

YHT General Meeting Minutes Continued...

Special Committees and Positions

New England Chapters Council (NECC)

NECC Rep., Judy Revelas. The painted wooden animals from NET Theme Development are being donated to a location for children, a hospital or something of the like. Our 2009 chairs for the Country Store and Theme Development did an excellent job. The Country Store made \$4300 this year. All chapters have their assignments for 2010 and all the dates have been set for the NECC/NET meetings which will be held in Marlboro, Ma.

New England Traditions (NET)

Class Selection will be held on February 6, 2010 at the Ball Financial Building in Westboro, MA

Unfinished Business – Recognition was given by Jean McKay to the following; Al Goulette, a former chapter member, who donated many items to our chapter and to Pat Flanagan for giving back her teachers fee and to Kathy Slawsky for making special cards for members and their families. Jo Madden thanked everyone who made 9" squares to send to California fire victims. She will be moving to CA after the holidays and Kathy Slawsky and her mom have agreed to take over collecting and sending the squares. All the squares come from donated yarn. A donation cup was available for shipping the squares. All yarn donations are welcome. One of Grace's students has a sister in CA that has received a blanket

Meeting adjourned at 11:13

Awards and Recognition

Recognition of the Officers, Board and Committee members

Maddy Reheame Award was given to Barbara Rolla

Chapter Achievement Award was given to Jean McKay

Installation Ceremony - Pat Flanagan presided over the ceremony. New Officers and board members were presented to members.

Second Vice President – Ann Marchese presented the afternoon program

FUND RAISING REPORT FOR 2009

I would like to thank everyone who painted an item*, donated an item, purchased an item, purchased a raffle ticket or volunteered at the NET Country Store because you contributed to our success this year. I also want to thank the members who hosted paint-ins for us – Chris Watson, Barbara Rolla and Grace Markauskas. And who helped out at the booth at SDP National in Peoria – Barbara Rolla, Chris Watson and Lynne Andrews. And Barbara Rolla for contributing her superbly painted trunk for the year long raffle. And, Chris Watson and Karen Bazinet who sold cookbooks (just plain cookbooks). Don't lose hope, there are some left. We netted more than \$2000 in total, which is fantastic! Included in that total are: Holiday House 2008 for which we received the money in 2009 (thanks also to Sue Leuci for waiving her commission for YHT's sales), our booth at the SDP convention in Peoria, NET Country Store profits, the yearlong raffle of the painted trunk, meeting raffles and private sales of cookbooks.

THANK YOU!

Jean McKay, Fundraising Chair

* So many of you painted for us this year and did so beautifully – I don't want to try to list your names because I'm afraid I'll forget someone.

YHT Chapter Happenings continued...

Paint for Freedom—Jo Madden

? Paint ? for ? Freedom ?

The Paint for Freedom cards returned at the September meeting are lovely! Thank you to Melissa Walsh, Mary St. Pierre and Cheryl Krilovich for getting their cards painted and back to me.

So far, I have received back 26 painted cards, leaving 24 outstanding ... and I know who you are!

Actually, things have changed a bit with regard to this program. It is still planned to be an ongoing, SDP sponsored program. The difference will be in the distribution of the finished cards. Last year, a special booth was designed and managed at the NET convention by Kathy Cross, a Gold Star mother and fellow decorative painter. This year, those cards finished in time were exhibited at this booth in Peoria, IL during the SDP convention. Following the 2009 NET convention, the finished cards will be divided up between YHT and the Gold Star mothers for distribution to veteran's hospitals, each group making their own choice of hospital.

In answer to questions asked, yes, the four sides must be painted, but only the top side must be decoratively painted, the other sides are at your discretion. The favored design is patriotic as it is probably best suited for most soldiers. No lacing or wording on the insides is necessary—that will be done later. But, if you feel moved to add these elements, please feel free to do so. Also, please, sign your artwork! And, of course, sign them back in to me.

Jo Madden
617.455.7523

xoxojoma@yahoo.com

Please contact me with questions

PS Thank you to Kathy Slawsky for volunteering to be my replacement in this effort after the first of the year.

Amanda Coulter's "Dream Surface" for color pencil work is Colourfix paper made by At Spectrum an Australian Company. It is for pastel and multi-media art. It can be purchased at **Jerry's Artarama** and **Dick Blick**. Both have online stores. It comes in about 20 colors and you can purchase in large or sheets that are 9x12. You can do a "google" search on the internet for **Art Spectrum colourfix paper** and find information.

Hope this helps, Gail Berinato

Knit, Crochet and Feel Good

As I have previously reported, an Encinitas, CA knitting shop (Common Threads) is collecting and assembling donated, knitted and crocheted squares to make blankets for every family who suffered a loss in the continuing fires there.

Thank you to Kathy Slawsky for volunteering to take my place in this effort after the first of the year.

The 9" squares all welcomed as is yarn for members to crochet or any donation you would like to submit for sending the squares to CA.

Thanks everyone!

Jo Madden

xoxojoma@yahoo.com

617.455.7523

Please contact me with questions.



"What a nice day we had for the installation day Tea Party! Thank you Ann Marchese and your committee for all of your planning and very pretty and delicious results. I would also like to say thanks for the Christmas Basket that I won as a raffle prize. It was full of many delightful and useful goodies. What a nice surprise! Happy Holidays to all!"
" Sylvia Ball

Secret Pal—Mary St. Pierre

Thank you to all members who participated in the Secret Pal Program for 2009. I hope your secret pal surprises were as wonderful as mine were. A BIG thank you to Julia Tufano for all the wonderful gifts I had received this past year. I love my ornament of Mickey Mouse and will keep him up all year long in my painting room. The warm and fuzzy packages were perfect for this past weekend.

Anyone wishing to participate in the secret pal can find the form online and/or contact me and I will send all necessary information.

Happy Holidays and Merry Christmas to all!

mary

YHT Chapter Happenings continued...

Sunshine— Kathy Slawsky

It is with great sadness that we send our sympathy to Linda Mandella and family over the passing of her husband

Thinking of you cards have been sent to Cheryl Barb and Jo-Anne Naugler for their recent surgeries. Please keep these women in your thoughts and send a card to let them know you are thinking of them.

If anyone would like a specific address to send a card to a chapter member, or former chapter member.. Please email Kathy Slawsky at laursky@aol.com and I will forward an updated membership list or send you a requested address.

Membership— Kathy Slawsky

The 2009 year is ending with 45 YHT Chapter members signed up for 2010.

It is that time of year again when we begin accepting membership renewals for 2010. As a reminder, you must be a member of SDP to join or renew with YHT, so please renew your SDP membership as well.

You can find a membership renewal form in this newsletter, online, or at the November meeting. Chapter dues are \$20.00 annually if renewed by December 31st.

Please make checks payable to **YHT**.

Membership renewals can be sent to:

**Judy Revelas 29 Grace Drive
Wilmington, MA 01887**

Community Service—Melissa Walsh

YHT is continuing to make a difference for pediatric patients and their families at the Children's Medical Center at UMass Memorial. Your donations to the Comfort Bag Program have been greatly appreciated. Since March 2009, we have donated over 50 journals, 20 blankets as well as a variety of toiletries and other items to the program. This is one small way we can make a difference for a family during their child's hospitalization. Carol Kronopolus, MS,RN is a member of the Family Centered Care Committee. She writes "It is a nice touch to improve their hospitalization. Thanks so much!" Please continue to support this program.

As a social worker at UMass Memorial, I work with adult patients and their families. The Social Workers have organized a clothing closet for patients who need clothing at discharge. This is often the situation with individuals who are homeless. During the winter months, we are in need of jackets, boots, socks, sweatshirts and sweatpants. Gently used donations are appreciated. Please feel free to contact me at walsh.mh@gmail.com Happy Holiday to you and your family, Melissa Walsh

Angel Boxes —Melissa Walsh

Arrangements are in place for a delivery of Angel Boxes to Women and Infants Hospital in Providence in November. We have 23 painted boxes ready to go. The chaplain reports that the Hospital has completed construction on a new annex giving the unit more space which includes greater storage for the donations. I am looking forward to having a tour and learning more about how YHT can help comfort their families. Please continue to support this wonderful program by painting and donating boxes. Please feel free to contact me at walsh.mh@gmail.com with any questions or ideas. Happy Holidays to you and your family, Melissa Walsh



Dumpster Diva—Sue Leuci

Congratulations to the winner of the Dumpster Diva Program for 2009. Jo Madden proudly displayed her tiara and her sash with her walk of fame. Jo will receive \$50 Yankee Bucks.

The Dumpster Diva Program will be changed slightly for the upcoming 2010 year. Information will be available to all members at the January meeting.

Thank you to all who participated in the many years of Dumpster Diva.
Sue Leuci

Upcoming Afternoon program with Mary McLean...

Yankee Heritage Tole Chapter
Presents an Afternoon Program with Mary McLean

Jan. 17, 2010

Time & Place: 1:00 to 5:00 p.m. at Knights of Columbus, 17 Willow Street, Westborough, MA 01581.

The project measures 6 1/2 x 6 1/2 in. You will need brushes #4,6,8,10,12 flats, #10/0 liner, #1Mop. Other possible brushes are...dome brushes or fabric scrubbers. Regular painting supplies and palette knife are needed.



Apples and Cherries (Good time to try something new for the New Year)

The focus of the class will be:

1. Introduction to Traditions artist acrylic paint (paints will be provided)
2. Brush techniques to achieve realistic appearance
3. Establishing a right hand light source
4. Painting a spherical form

If you purchase the surface offered, it will be prepped for you. If you are not using this surface, I will get the prep instructions to you.

Any questions, please contact Barbara Rolla at 413-967-5444 or by e-mail at brolla@verizon.net

Keep the top portion of this form

Afternoon Program with Mary McLean, Jan. 17, 2010.

(Please register before Dec. 15, 2010, if you want the surface)

Please return this form if you plan to attend the meeting whether or not you will be painting.

Name: _____ E-mail: _____

Address: _____

Phone: _____

Sunday, Jan. 17, 2010

I _____ will _____ will not attend the General Meeting at 10:00 am

I _____ will _____ will not attend the afternoon program with Mary McLean.

No. of Guests: _____ attending the meeting – write the names(s) of your guest(s) on the back of this sheet.

I am enclosing \$10.00 for each person attending the afternoon program \$ _____

I am enclosing \$17.00 for each prepped surface \$ _____

I am enclosing \$5.00 for each packet \$ _____

I am enclosing \$7.50 for each lunch ordered \$ _____

Total \$ _____

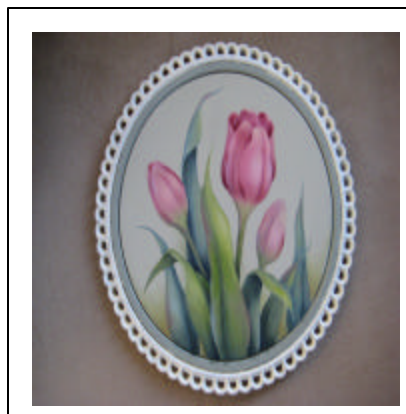
Upcoming Workshop with Mary McLean CDA February 13, 2010

YANKEE HERITAGE TOLE
CHAPTER

Presents A Workshop with
Mary McLean, CDA
February 13, 2010

Time: 10 a.m. to 5 p.m.
Place to be determined

We are pleased to offer this
workshop with Mary McLean.
She will be teaching her tulip
design in oils.



The paints will be provided and the palette fee is mandatory. Mary will be prepping the surfaces that are ordered from her. A line drawing and prep instructions will be available prior to the workshop for those using their own surfaces. You may purchase the surface from Mary or bring your own. You must purchase a pattern packet for this workshop unless you have previously purchased it from Mary.

Food: Coffee, tea and pastries will be provided. You may bring your lunch or purchase it nearby. Or, you may select and pay for a lunch from the deli menu and we'll have it delivered.

Payment: **Two (2) checks are required to sign up for this event.** One to YHT for \$10 to hold your space – this check will be returned to you at the workshop if you attend – and one to Mary McLean for the surface, palette fee and/or the packet.

Any questions contact: Jean McKay at 508/883-0886 or jmckay1210@charter.net

KEEP THE TOP PORTION OF THIS FORM

Workshop with Mary McLean, CDA February 13, 2010
Please sign up by January 18, 2010

Name _____

Mailing Address: _____

Phone: _____ E-Mail: _____

I am enclosing \$10.00 payable to YHT

AND

Prepped Surface: _____ at \$13.00 each

Amount sent: _____

Packet: _____ at \$9.00 each

Amount sent: _____

Palette Fee: *mandatory \$3.00

Amount sent: _____ **\$3.00***

Total Payable to Mary McLean

\$ _____

Mail **Both** Checks and sign up sheet to: Jean McKay, 29F Cork Circle, Millville, MA 01529

Teacher's Showcase

Lynne Andrews
Folk Art
Artist/ Designer/ Author/ Teacher
181 Tourtellot Hill Rd.
Chepachet, RI 02814
andrews181@cox.net
www.lynneandrews.com

Maureen J Baker
Artist Designer Teacher
www.toleby.com website
maureenjbaker@msn.com email
978 256 5949 phone
Classes Commissions Seminars

Original Designs ★ Classes ★ Seminars

Mary McLean, CDA
8 Sharon Avenue
Norfolk, MA 02056
(p) 508-384-7191
mcleanmdl@aol.com



Decorative Artist, Teacher and Designer

Tole Sampler

Mary Svenson, CDA

E-mail: tolesampler@comcast.net
www.tolesampler.com

978-692-3261
24 Buckboard Drive
Westford, MA 01888



Timeless Treasures
 Barbara Rolla
4 Woodland Heights
Ware, MA 01082
Decorative Painting Classes
Supplies Wood Cutting
Hand Painted Items
Tel. 413-967-5444
e-mail: brolla@verizon.net



Christine A. Watson
30 Templeton Street
Newville, MA 01529
608-876-1122

Weekly Classes & Workshops
Handpainted from the Heart

Workshop with Lynne Andrews April 24, 2010

YANKEE HERITAGE TOLE CHAP-
TER

Presents A Workshop with Lynne An-
drews

April 24, 2010

Time: 10:00 a.m. to 5:00 p.m. Lo-
cation to be determined

We are pleased to offer this workshop
with Lynne Andrews. She will be
teaching *Christmas Wishes* her snow-
man on a mitten design which is painted
in acrylics.



A line drawing, prep instructions, materials and paint list will be available prior to the workshop. You may purchase a surface from Lynne or bring your own. You must purchase a pattern packet for this workshop unless you previously purchased it from Lynne.

Food: Coffee, tea and pastries will be provided. You may bring your lunch or purchase it nearby. Or, you may select and pay for a lunch from the deli menu and we'll have it delivered.

Payment: **Two (2) checks are required to sign up for this event.** One to YHT for \$10 to hold your space – this check will be returned to you at the workshop if you attend – and one to Lynne Andrews for the surface and/or the packet.

KEEP THE TOP PORTION OF THIS FOR

Any questions contact: Jean McKay at 508/883-0886 or jmckay1210@charter.net

Workshop with Lynne Andrews, April 24, 2010

Please sign up by April 1, 2010

Name _____

Mailing Address: _____

Phone: _____ E-Mail: _____

I am enclosing \$10.00 payable to YHT

AND

Wooden Mitten ____ at \$6.00 each

Amount sent: _____

Packet: ____ at \$8.00 each

Amount sent: _____

Total Payable to Lynne Andrews

\$ _____

Mail **Both** Checks and sign up sheet to: Jean McKay, 29F Cork Circle, Millville, MA 01529

Nov Installation Recipes

Black Bottom Cups

Filling

1 cup (8oz) Cream Cheese 1 egg unbeaten
 1/3 cup sugar 1/8 teaspoon salt
 1 cup Nestle semi sweet choc bits(Iused mini bits on the small pans)

Cake

1 1/2 cups flour 1 cup sugar
 1/4 cup cocoa 1 teaspoon baking soda
 1/2 teaspoon salt 1 cup water
 1/3 cup veg oil 1 tablespoon vinegar
 1 teaspoon vanilla Beat until well combined

Fill muffin cups, line with paper, one-third full with choc batter. Top each one with heaping tsp.ful (small ones use less) with cream cheese mixture. Sprinkle with sugar and chopped blanched almonds, if desired. Bake at 350* for 30-35 min. Small cupcakes I baked about 20 min. Check for completion. Enjoy

Gingersnaps

1 cup packed brown sugar 3/4 cup cooking oil
 1/4 cup dark molasses 1 egg
 2 cups flour 2 Teaspoon baking soda
 1 teaspoon cinnamon 1 teaspoon ginger
 1/2 teaspoon cloves 1/4 teaspoon salt
 Combine first 4 ingred. And beat well. Add next 6 ingred. And gradually blend into molasses mixture. Using about 1 tablespoon of each cookie form into 1 1/2 " balls. Roll in granulated sugar. Place 2" apart on ungreased cookie sheet. Bake at 375* for 10-12 minutes. Yield 4 dozen
 Barbara Rolla

Strawberry and Chicken Salad:

1 package (10oz) romaine salad greens or about 8 cups torn romaine
 1 package (6 oz) prepared oven roasted chicken breasts cut (I usually grill chicken tenders)
 1 can Mandarin orange segments, drained
 2 cups sliced strawberries
 1/2 medium red onion sliced
 Poppyseed Dressing(Ilike Olde Cape Cod Sweet and Sour Poppyseed Lite)
 Melissa Walsh

Chicken Salad Sandwiches with Cranberry/Apricot Chutney

1 rotisserie chicken, meat coarsely chopped
 1 (3 oz) package cream cheese, softened
 1/4 cup mayonnaise
 1 Tbsp chopped chives or green onion
 1 tsp chopped fresh sage
 1 tsp chopped fresh thyme(Iused dry)
 1/4 tsp salt
 1/4 tsp ground black pepper
 1 loaf thinly sliced white bread(Iused Pepperide Farm)
 1/2 cup chopped pecans, toasted (I omitted toasting)
 1/8 tsp celery salt (I omitted)
 In a medium bowl, combine the chicken, cream cheese and mayo. Stir to combine. Add the chives, sage, thyme and salt - pepper.
 Spread a layer of chicken salad onto one slice of bread and top with a second slice. Cut the crusts off the bread and cut into triangles. Repeat with remaining slices and salad.
 Place pecans in a shallow bowl. Gently press edges of each sandwich into pecans to coat. Arrange sandwiches on plate or footed plate, having the pecan-coated edges standing up. Garnish plate with parsley and serve chutney on the side.
 Makes 18 sandwiches.

Cranberry and Apricot Chutney

1 (8 oz) package fresh cranberries
 1 (7 oz) package dried apricots, chopped
 2/3 cup apricot preserves
 1/2 cup water
 1 shallot, finely diced.
 In a medium saucepan over medium heat, combine ingredients. Cook until reduced by a third, about 30 minutes. Remove from heat and cool completely. Store in fridge until ready to use.
 Makes about 2 cups.
 Jo Madden



Upcoming 2010 YHT Seminar for March 19, 20 and 21...



**2010 Seminar with
Mary Kingslan Gibilisco on March 19, 20 and 21**

Place: Knights of Columbus, 17 Willow Street, Westborough, MA 01581
Time: 9:00 to 5:00 p.m. on Friday and Saturday and Sunday for the afternoon program

We are thrilled to have Mary Kingslan Gibilisco come to our chapter. All the projects will be painted in oils.

Friday, Mar 19, 10: We will be painting Autumn Fruit Panel. The Panel is 12x24 masonite.

Saturday, Mar 20, 10: Project is Wine and Cheese in a Niche, done on a plaque type arch board.

Sunday, March 21, 2010: The project for Sunday is Simple Blossom on a basket with lid.

Mary will prep all the surfaces. Supplies needed for these seminar days are: Majestic Brand Brushes, Liners: 10/0 liner and 3/0 spotter, Kingslan and Gibilisco Mops: Sizes #00 - #4, Kingslan and Gibilisco Filberts: Sizes #2-12 and 4150F #20 (for Wine Bottle piece). Misc. Supplies are Painting/mixing knife, tracing paper, grey transfer paper, white transfer paper, sharpie marker to mark palette, palette, jar lid for medium, tissues, paper towels, pencil and paper for note taking.

Paint included for all 3 programs—Questions? - contact Barbara @ brolla@verizon.net or 413-967-5444.

Please keep upper portion of registration sheet for your records

Seminar with Mary Kingslan Gibilisco March 19,20,21 2010
(Deadline for ordering surfaces is Jan. 17, 2010)

Name: _____ Street: _____
 City: _____ State _____ Zip Code _____
 Phone: _____ E-mail _____

Friday, March 19, 2010— Autumn Fruit Panel

Enclosed is \$68.00 for class fee and lunch Amount \$ _____
 I am enclosing \$8.00 for prepped surface _____

Saturday March 20, 2010 – Wine & Cheese in a Niche

I am enclosing \$68.00 for class and lunch _____
 I am enclosing \$18.00 for prepped surface _____

Sunday-General Meeting, March 21, 2010 – Simple Blossom

I _____ will _____ will not attend the general meeting at 10:00 a.m.,
 I _____ will _____ will not attend afternoon program with Mary Kingslan Gibilisco
 Number of guests: _____ will attend the meeting _____ will attend the program
 Please write the name(s) of your guest(s) on the back of the sign-up sheet.
 I am enclosing \$25.00 for each person attending the afternoon program w/paint _____
 I am enclosing \$20.00 for prepped basket _____
 I am enclosing \$7.50 for each lunch ordered _____

TOTAL

checks payable to YHT and mail to Barbara Rolla, 4 Woodland Heights, Ware, MA 01082-9756

New England chapters Council/New England Traditions Updates...

NECC/NET NEW ENGLAND TRADITIONS

RAFFLE PIECES AND THEIR WINNERS

"Twelve Days of Father Christmas" Painted Santa painted by Lynne Andrews

JoAnn Brown, Niantic, CT

Red painted tin piece with A New England Winter Seaside Scene painted by Cynthia Erikson

Kris Lafayette, N. Billerica, MA

Large painted sled with Jingle Bells painted by Gail Frigon, CDA

Ronald Riordan, Poughkeepsie, NY

Wooden sleigh painted with Gail Anderson design by Jane Hoffman

Nancy Fagan, Willington, CT

"O Holy Night" Russian Lady painted by Grace Markauskas

M. Stemle, Hamden, CT

Candle Box with Poinsettias painted by Mary McLean, CDA

Janet Kretschmer, Stroudsburg, PA

"Noel" Painted tree shaped lid for silver beaded basket painted by Laure' Paillex

Carol Lavasseur, Greene, ME

"Santa in the Woods" framed picture painted by Donna Scully

Cheryl Barb, Merrimack, NH

Pears and Holly on Painted Tin by Julie Talarski

Michele Whitney, Warwick, RI

Carved Santa with Telemark Rosemaling painted by Karen Zemko

Shirley Marth, Bozrah, CT

Many painters: "Woodland Christmas tree" with painted ornaments

Meeting Dates and Class Selection are as follows (please make sure chapter chairs and reps know these dates).

January 23 NET Meeting

February 6 Class Selection (Ball Finance Building)

March 27 NET Meeting

April 24 NET Meeting

June 5 NET Meeting

August 21 NET Meeting

Listed below are the chapter assignments for 2010. I look forward to working with all of you.

Chapter Assignments for 2010-

Yankee Heritage Tole Chapter Art Show

Move In/Move Out

CT Society of Decorative Painters Exhibit Hall

Country Store

White Mountain Decorative Painters' Guild

Theme Development - Raffles

Capitolers Teacher

Selection/Demos

Sea Strokes

Banquet

Tole 'n ME

Registration

Little Rhody Rembrandts

Volunteers

CT Yankee Painters

Ads and Patrons

If you have any questions please call or email me. More detailed information will follow at a later date.

Grace Markauskas

2010 Convention Chair 1 Riverview Blvd, Unit 1004

Methuen, MA 01844

978-685-3744 (home)

510-326-0014 (cell)

National Events...

DECORATIVE ARTS COLLECTION

As 2009 draws to a close ...

I can't believe how quickly this year has gone by! It seems that only a few weeks ago I was putting away decorations and now it is time to bring them out again.

As the year draws to a close, the Museum is in its 2009 Annual Fund Campaign. This is your opportunity to make an end-of-year tax deductible donation to the Museum. Our goal for this year's campaign is \$10,000. To date we have raised over \$2,000.

If you are considering making charitable contributions this year, think of *your* Museum.

This is one charity that is close to your heart, that works all year to preserve the heritage of the art form you love, and that promotes this art form to the public through educational forums, publications and exhibits. It is worthy of your support. You can drop your donation in the mail, or call me at 404-627-3662 to make your contribution with a credit card.

At the end of each Museum Message there is a link to ShopforMuseums.com. I urge you to use this portal when you are doing your online shopping this holiday season. A percentage of your purchases is automatically donated to the museum of your choice. It is a great way to help the Museum every time you shop -- and, it costs you nothing! There are more than 500 online retailers, including most of your favorite stores, who are participating.

I hope you have a wonderful Thanksgiving with your loved ones... and remember, save a slice of pumpkin pie for me!

Andy Jones, Director

Decorative Arts Collection Museum

A Word to Our Readers:

While in preparation for the fall issue of the magazine, a number of different factors—some of them beyond our control and some of them homemade—came together to create the equivalent, in publishing, of "the perfect storm" for the staff of *The Decorative Painter*. Many of you will have noticed that the magazine was, therefore, very late, and the magazine's staff wishes to sincerely apologize to you, our ever-patient readership, for any unhappiness or inconvenience this caused. Our first concern, always, is to deliver a magazine of which you can all be proud.

This mishap, however, came with a golden lining. Thanks to your feedback, 2010 will see the emphasis on holiday projects being moved from our fourth issue of the year to our third, approximately three full months earlier. We've also received valuable input about the kinds of projects and features you'd like to see. But we're always anxious for more, and you can do your part by filling out and returning the reader survey included in the forthcoming issue of *The Decorative Painter*.

That issue, by the way, has gone to press as of this writing. Although your print copy of the magazine will be arriving in the mail soon (in the first week of December, approximately), we are making an online version of the complete magazine available to you now. [Simply follow this link to the website homepage](#), click on the picture of Issue #4 and log in with your SDP membership number. Please note that your Conference Special catalog will arrive in the mail with your Decorative Painter magazine and will be posted online on Dec. 29, 2009. Conference registration will begin on Jan. 5, 2010.

Have a safe and happy holiday!

Your SDP Publications Department

New England Traditions Art Show Awards 2009

Category	Award	Professional Division	Hobbyist Division
		Name	Name
Animals	First Place	Linda McClure	Lee York
Animals	Second Place	Carol Howard	Jane Harve
Animals	Third Place	Laurie MacKenzie	Marion Therrien
Floral	First Place	Diane Lazarin	Jean McKay
Floral	Second Place	Laurie MacKenzie	Terry Baruffa
Floral	Third Place	Bonnie Federico	Jan Fuller
Folk Art	First Place	Carol Howard	Jane Hoffman
Folk Art	Second Place	Susan Mangano	Jan Fuller
Folk Art	Third Place	N/A	N/A
Holiday	First Place	Paula Lawton	Peggy Hoffman
Holiday	Second Place	Barbara Roller	Marion Therrien
Holiday	Third Place	Janice Tomlin	Jan Fuller
Landscape/Seascape	First Place	Susan Mangano	Kristine Beckman
Landscape/Seascape	Second Place	Helen Hanes	Marion Therrien
Landscape/Seascape	Third Place	Gloria Woodwell	Sylvia Ulion
People	First Place	Diane Lazarin	Jan Fuller
People	Second Place	Laurie MacKenzie	Lorrain Hynes
People	Third Place	Stephanie Pooler	Terry Baruffe
Still Life	First Place	Amanda Coulter	Cecilia Laurendeau
Still Life	Second Place	Chris Watson	Betty Scott
Still Life	Third Place	Dorothy Pullo	Gail Tefft
Strokework	First Place	Sandy Scales	Carol Roberts
Strokework	Second Place	Jan Aldrich	Jane Hoffman
Strokework	Third Place	Paula Lawton	Jane Harvey

Division Winners: Professional: Amanda Coulter
Hobbyist: Cecila Laurendeau

Peoples Choice: Professional: Amanda Coulter
Hobbyist: Marion Therrien

Birthday Girls

To anyone wishing to receive a birthday baked goodie (cupcake, special cookie, whichever my festive fingers are in the mood for) at a general meeting near your birthday – Please send me your birthday date without the year. I would be happy to make something special for you!!



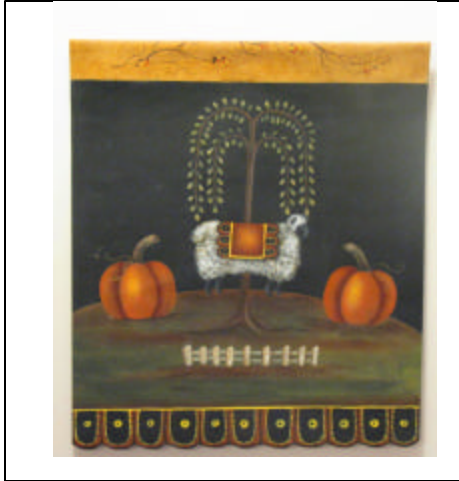
Please contact me by email: nasi@net1plus.com

Phone: 508-476-1655

Snail mail: 45 Fairbanks Ct. Douglas, MA 01516 or at a general meeting. I will have a special birthday book ready to write everyone's dates in.

Upcoming Workshop with Chris Watson June 5, 2010

YANKEE HERITAGE TOLE CHAPTER
Presents A Workshop with Chris Watson
June 5, 2010
Time: 10 a.m. to 5 p.m.
Place to be determined
We are pleased to offer this workshop with Chris Watson. She will be teaching *Fall Blessings* in acrylics on Roc-Lon.



The project may be used as either a garden flag or a banner (by inserting a dowel and twine or ribbon for hanging).

Chris' price of \$15.00 includes the surface, packet, paint and fabric medium. In addition, Chris will prep the surfaces. All you'll need to bring are your brushes and general acrylic supplies.

Food: Coffee, tea and pastries will be provided. You may bring your lunch or purchase it nearby. Or, you may select and pay for a lunch from the deli menu and we'll have it delivered.

Payment: Two (2) checks are required to sign up for this event. One to YHT for \$10 to hold your space – this check will be returned to you at the workshop if you attend – and one to Chris Watson everything else.

Any questions contact: Jean McKay at 508/883-0886 or jmckay1210@charter.net

KEEP THE TOP PORTION OF THIS FORM

Workshop with Chris Watson June 5, 2010
Please sign up by May 15, 2010

Name _____

Mailing Address: _____

Phone: _____ E-Mail: _____

**I am enclosing \$10.00 payable to YHT
AND
I am enclosing \$15.00* payable to Chris Watson**

Mail **Both** Checks and sign up sheet to: Jean McKay, 29F Cork Circle, Millville, MA 01529

*Price includes surface, packet, surface prep, paint and fabric medium.

Society of Decorative Painters Membership Form



Society of Decorative Painters

2010 MEMBERSHIP FORM

1 MEMBER PROFILE *Please print name and address as it should appear on the mailing label.*

Name _____ Membership no. (if renewal) _____
 *Household Member Name (if purchasing a Household Membership) _____ Membership no. (if renewal) _____
 Business Name (if joining as a Business Member) _____
 Mailing Address _____ City _____
 State/Prov _____ ZIP/Postal Code _____ Country _____
 Email _____ Website _____
 Phone () _____ Fax () _____

I am a member of at least one SDP chapter. Yes No

(For information on chapters in your area, please call 316-269-9300 ext. 107 or visit our website at www.decorativepainters.org.)

I would like to give \$2, \$5, \$10 or \$ _____ to the SDP Foundation, which provides scholarships to members and supports other SDP initiatives.

2 MEMBERSHIP CATEGORIES [CHECK APPROPRIATE BOX(ES)]

Mark this box if you wish to pay for 2011 membership also.

U.S.

- \$40 Individual (\$45 after 12/1/09)
 \$70 Business (\$75 after 12/1/09)

ANY COUNTRY (U.S. FUNDS)

- \$20 Household

Household Membership is for an additional member sharing the same address as an Individual or Business member. If selecting this option, no printed *Decorative Painter* magazine will be mailed to you.

INTERNATIONAL & CANADA (U.S. FUNDS)

- \$70 Individual (\$75 after 12/1/09)
 \$40 Online Individual**
 \$100 Business (\$105 after 12/1/09)
 \$70 Online Business**

The higher international rate reflects postage costs, not an increase in dues.

** Online memberships: You will receive the magazine online only. If selecting this option, no printed *Decorative Painter* magazine will be mailed to you.

IMPORTANT

Membership year is Jan. 1. to Dec. 31, 2010. If you join at any month of the year you will receive the back issues and get all the benefits for the rest of the year. Dues postmarked after Dec. 1, 2009, require additional \$5 postage and handling fee. This does not apply to new members or those who were not a member in 2008 or 2009.

3 BUSINESS & TEACHER DIRECTORY RESOURCE CATEGORIES (OPTIONAL)

BUSINESS MEMBERS ONLY

Business Members, check all boxes that apply for the 2010 *Business & Teacher Directory*. Listings and *B&T Directory* are free with your business membership. Visit SDP's website, www.decorativepainters.org, to submit a fifty-word description of your business and to submit subcategories associated with your business. These additional subcategories and descriptions will be added only to the *B&T Directory Online Resource*. You must join or renew by Dec. 1, 2009, in order to be listed in the printed version of the 2010 *Business & Teacher Directory*. Those who join or renew after Dec. 1 will be added to the *B&T Directory Online Resource* only.

- Author
 Distributor/Wholesaler
 Home Studio
 Manufacturer/Importer
 Publisher
 Retailer
 Teacher
 Travel-teacher
 Other

(OPTIONAL)

INDIVIDUAL MEMBERS ONLY

Individual Members, check all boxes that apply. Listings are \$10 each per year.

- Author
 Teacher
 Travel-teacher
 Design and/or painting skills for hire

The 2010 *Business & Teacher Directory* will be available for sale in spring of 2010. Check the box in the next section to preorder your copy.

4 BUSINESS & TEACHER DIRECTORY PREORDER (OPTIONAL)

- Free for Business Members (all countries)
 \$12 • Directory price for U.S. Members
 \$20 • Directory price for International Members (U.S. funds)

To be included (based on the categories you checked above), you must renew your membership by Dec. 1, 2009. Copies will be mailed in spring 2010.

5 PAYMENT

Make checks payable to: SDP, 393 N. McLean Blvd., Wichita, KS 67203-5968. • For faster service, use MasterCard or VISA and call (316) 269-9300 ext. 105, or fax application to (316) 269-9191 • Join online at www.decorativepainters.org.

Note: SDP serves its members by providing information and communications via email. These communications include, but are not limited to, e-zines such as *Chapter Happenings* newsletter, informational e-blats, and notification of contests and promotions from SDP business members. If you would prefer not to receive newsletters and other communications, please do not provide your email address.

Total _____

VISA MasterCard Exp. date _____

Card number _____ Signature _____

Yes! This is a Gift Membership from _____ Memb. no. _____

DUES POSTMARKED AFTER DEC. 1, 2009, REQUIRE AN ADDITIONAL \$5 POSTAGE/HANDLING FEE (DOES NOT APPLY TO NEW MEMBERS).

Yankee Heritage Tole Chapter Membership Form

Name: _____ SDP Membership #: _____

Street _____

City _____

State _____ Zip _____ Home phone _____ Business phone _____

e-mail address _____

Circle **All** that apply: New Member Renewal Shop Owner Teacher Student

Referred to YHT by _____

(name of YHT member)

Do you want your address and phone to be listed in the YHT Directory: ___yes ___no

If you want to have your shop listed, please fill in the following:

Shop Name: _____

Address: _____

I would like to receive my newsletter as follows, check one:

By hard copy via US postal service _____

By e-mail notification that the newsletter is available on YHT's website _____

Annual Membership Dues: \$20.00

Send this form and a **check payable to YHT** to:

Judy Revelas 29 Grace Drive Wilmington, MA 01887

NOTE: You must be a member of SDP to become a member of Yankee Heritage Tole Chapter. Please send SDP dues directly to SDP's National Office. You may be required to show your SDP membership card and/or your YHT membership card at YHT events and program.

VISIT YHT's WEBSITE

Go to www.yankeeheritagetolechapter.com and find out what's happening. There are color photos of all our upcoming workshops and seminars. See photos of past happenings. Do you have some great digital photos of YHT events? Send them to our webmaster, Mary St. Pierre at nasi@net1plus.com.

Decorative Arts Collection

In the past they have printed many wonderful books but the book of Painted Quilts beats them all. These handpainted quilts and companion pieces are to die for. Call 404-627-3662 or click www.decorativeartscollection.org to place your order. You get 1 incredible book, 1 bonus CD of full size patterns you can paint, plus color images which can be printed on fabric on your home printer!, by talented artists (Trudy Beard, Peggy Stogdill, Jamie Mills-Price, Donna Dewberry, Bobbie Takashima, Judy Diephouse and Lynn Deptula, Mary Wiseman, Jo Sonja Jansen, Andy Jones, Sherry Nelson, Peggy Harris, Ronnie Bringle, Cynthia Erikson and Chris Thornton-Deason—28 amazing projects (including non-fabric surfaces) for only \$24.95 plus shipping and handling. While you're at it support this wonderful group by becoming a Friend of the DAC.

Newsletter Information

The *Yankee Tole Crier* is published 5 times a year. ***The newsletter deadline is 12:00 noon the Friday following the General Meeting.*** The newsletter will be placed together **THAT** Saturday. All material is to be emailed and/or submitted on diskette with a hard copy of the report. Photos should be of quality that they can be copied for clarity of a copy from the copy of the original photo. Any problems with the printing and mailing of the newsletter should be directed to Newsletter Editorial Assistant Chris Watson. She can be contacted via email: handpaintedheart@hotmail.com.

Mary St.Pierre Editor, Yankee Tole Crier
nasi@net1plus.com

Directions to our meeting...

John Boyle O’Rielly Council No.. 85
17 Willow Street, Westborough, MA
01581

From Mass Pike to I-495 North (go left)

I-495 (from either direction) take Exit
23B—Westboro

Right onto Route 9 West (Worcester)

Right onto Rt. 30 West (also known as
East Main Street)

Go past CVS/McDonalds

Just before the overhead railroad bridge
turn right onto
Willow Street

NOTE: Be sure to check specific locations
for seminars, workshops and/or paint-ins
you might be attending. The location and
directions should be listed on the registra-
tion forms.

Quaker Inn & Conference Center

442 Quaker Highway
Route 146A, Uxbridge, Ma 01569
Phone: 1888-355-7200 or
508-278-2445 [www.Quaker-
Inn.com](http://www.Quaker-
Inn.com)

Directions:

FROM North : Rt 146 South from
Mass Pike and Worcester to Rt 146A,
Chockalog Rd. Uxbridge exit. Turn left
At end of exit. At intersection turn right
Onto Rt 146A South. Quaker Inn &
Conference Center is ¼ mile on left.

FROM South : Rt 146 North from
Providence to RT 146A, Uxbridge/
Smithfield Exit. Turn left onto Rt 146A
North. Quaker Inn & Conference Cen-
ter

Is 1 ½ miles on the right

Things to bring to the meeting...

1. \$\$ for shopping at the Yankee Trader
2. Ads Reports and information for the Newsletter
3. Community Service Project
4. Donate a door prize for a future meeting
5. Guest(s) to introduce to YHT
6. Items for Show, Share and Tell
7. Local Papers for Publicity
8. Painted name tags
9. Regular painting supplies for the Sunday afternoon Program
10. Returns to our library (videos and books)
11. YHT Membership renewal form

Mary St. Pierre
YHT Newsletter Editor
45 Fairbanks Ct.
Douglas, MA 01516

