



# Yankee Toile Crier

[www.yankeeheritagetolechapter.com](http://www.yankeeheritagetolechapter.com)

*The Official Newsletter of the Yankee Heritage Toile Chapter  
An Affiliated Chapter of the Society of Decorative Painters*

2011, Issue # 123

Editor: [mdb01746@msn.com](mailto:mdb01746@msn.com)

June—September

## **Presidential Chapter Chatter...**

Summer is finally here. We had a great meeting and I want to thank Cindy Harrison for teaching the afternoon program. Everyone's project looked great.

The programs we are having are as follows: Grace will be teaching in Sept. (The sign-up sheet is in this newsletter). Please sign up as soon as possible, so that we can get the surfaces prepped and ready to paint at the meeting. Those signing up at the June meeting received theirs already.

In January we are having an angel box painting meeting. There will be no charge for coming to the meeting and you are asked to bring a friend to paint with us. We will be having different teachers available to teach the angel box patterns. In March, Lynne Andrews will be teaching the three day seminar. One project is a Santa and the others are being designed especially for us by Lynne. We hope to have the information available at the September meeting.

We no longer will be meeting at the hotel in Marlborough. Our September meeting will be at the VFW Hall, 16 South Main Street, Millbury Ma. It is located just off of Rt. 146. We have not signed any contract to meet here permanently. We need to look for a new meeting place. If anyone has any suggestions, please contact me. We would like to keep our meetings in Central MA so that it would be convenient for everyone.

We also discussed the JoSonja painting at the meeting. I suggested donating the painting to the SDP museum, so that it can be seen and appreciated by decorative painters from all over the world. The museum has works from the past 40 years to represent the history of decorative painting and it would be a shame for our painting to just be sitting around and not being seen. We could ask for a plaque saying that YHT donated it to the museum.

Some members thought that it should be appraised and possibly sold. As a painting, I don't believe it would be worth that much on the open market. It is valuable to us, as decorative painters, but the general public would not know who JoSonja is. I think that we should have a vote at the September meeting to see if members agree that it should go to a museum. We can discuss it at that time and decide what to do with the painting.

NET is well underway and it looks like it will be a great convention. If you are planning on attending, you should get your registration in so that you can get the classes you want.

Enjoy the summer months and I hope to see everyone at the Sept. meeting.

Barbara Rolla

## What's Inside...

2. Officers & Board, Calendar & Cancellation Policy
3. Treasurer's Report
4. 2nd Vice President's Report// Minutes of April Meeting
6. Teacher Submissions for 2012/ Recipe Corner
7. Yankee Fundraising/What's Up?
8. Chapter Happenings  
Community / *Angel Boxes / Library/Yankee Trader*
9. Painting Tip of the Month
10. News/NECC—Sister Chapters
11. Raffle
12. News from National
13. General Meeting with Grace Markauskas
14. Installation Meeting
15. Shout Out Form
16. Teacher's Showcase
17. 5P Form
18. Membership Form
19. Directions

## YHT 2011 Calendar

- January 16 – Board and General Meeting—Afternoon Program with Kim Hogue
- January 22 – NECC/NET Meeting
- February 5 – NET Class Selections
- February 26 – Workshop with Grace Markauskas
- March 18 and 19 – Seminar with Sandy Scales
- March 20 – Board and General Meeting— Afternoon program with Nancy Mullen
- March 26 – NECC/NET Meeting
- April 23 – NECC/NET Meeting
- April 30 – Workshop with Mary McLean
- May 16 - 21 – SDP Convention
- May 21 – Workshop with Bonnie Frederico
- June 4 – NECC/NET Meeting
- June 26 – General Meeting— Afternoon program with Cindy Harrison
- August 20 – NECC/NET Meeting
- September 18 – General Meeting— Afternoon program with Grace Markauskas & Cindy Cleary
- October 5 thru 9 – New England Traditions Convention
- November 5 – NECC/NET Meeting
- November 20 – General and Installation Meeting— Afternoon program with Maria Costantini

## YHT Officers, Board, Positions & Committees

### 2011 Officers, Board Members and Committee Chairs

President	Barbara Rolla	413-967-5444	brolla@verizon.net
1 <sup>st</sup> Vice President	Needed		
2 <sup>nd</sup> Vice President	Maria Costantini	781-598-2975	mynoah39@yahoo.com
Secretary	Mary St. Pierre	Treasurer	Jean McKay 508-883-0885
	jmckay1210@charter.net		
Membership	Judy Revelas	978-658-3158	jrevelas@comcast.net
Past Pres./Advisor	Grace Markauskas	978-685-3744	Itsjustgrace@hotmail.com
Board Members:	Pam Aucoin	413-967-6464	pg31@comcast.net
	Cheryl Krilovich	508-853-0555	herylk321@charter.net
	Lola Nagle	401-884-7016	lolng13@aol.com
	Fran Rutkowski	413-283-5134	rutkowski109@comcast.net
	Kathy Slawsky	508-836-9507	laursky@aol.com
	Julia Tufano	508-757-3170	tufano.rosie@gmail.com
	Melissa Walsh	508-344-1509	walsh.mh@gmail.com
	Joan Wilding	508-646-0232	w849bil@comcast.net

### Appointed Positions

Advertising	Marie Primo	508-339-4749	mprimoyht@hotmail.com
Historian	Kristi & Luann Klick	401-647-3638	
Newsletter Editor	Maryalis Bushee	508-429-5576	mdb01746@msn.com
Newsletter Asst.	Chris Watson	508-876-1122	handpaintedheart@hotmail.com
Nominating			
Parliamentarian	Jean McKay	508-883-0886	jmckay1210@charter.net

### Committees

Angel Boxes	Melissa Walsh	508-344-1509	walsh.mh@gmail.com
Audit	Jean McKay	508-883-0886	jmckay1210@charter.net
Budget	not needed 2011		
Community Serv.	Melissa Walsh	508-344-1509	walsh.mh@gmail.com
Fund Raising	Jean McKay	508-883-0886	jmckay1210@charter.net
Hospitality	Pat Flanagan	978-356-5878	paf0802@verizon.net
Library	Maria Costantini	781-598-2975	mynoah39@yahoo.com
Meeting Raffle	Barbara Rolla	413-967-5444	brolla@verizon.net
New Product Eval.	Barbara Rolla	413-967-5444	brolla@verizon.net
Ornament Swap	Sue Miller	508-295-0171	suemillerca@comcast.net
Paint for Freedom	Kathy Slawsky	508-836-9507	laursky@aol.com
Scholarship	Judy Revelas	978-658-3158	jrevelas@comcast.net
Secret Pal	Mary St. Pierre		
Show, Share & Tell	Grace Markauskas	978-685-3744	itsjustgrace@hotmail.com
Standing Rules	Jean McKay	508-883-0886	jmckay1210@charter.net
Sunshine	Kathy Slawsky	508-836-9507	laursky@aol.com
Webmaster	Mary St. Pierre		
Workshops/Paint-Ins	Jean McKay	508-883-0886	jmckay1210@charter.net
Yankee Trader	Pam Aucoin	413-967-6464	pg31@comcast.net
Volunteer Coord.	Judy Revelas	508-658-3158	jrevelas@comcast.net

### New England Chapters Council/New England Traditions

Chapter Rep.	Mary St. Pierre		
Class Selections	Kathy Slawsky	508-836-9507	laursky@aol.com
Ads & Patrons	Judy Revelas	508-658-3158	jrevelas@comcast.net
Exhibit Hall	Laura Peterson	978-465-6012	laura.r.peterson@comcast.net

## Meeting/Activity Cancellation Policy

To see whether or not a YHT activity has been cancelled due to weather (or other reason)-check our website at [www.yankeeheritagetolechapter.com](http://www.yankeeheritagetolechapter.com). This will be posted no later than 7:00 a.m. on the day of that activity. If you don't have access to the internet, please call a friend who does or call Barbara Rolla at 413-967-5444.

# YHT Treasurer's Report—June 2011

## Yankee Heritage Tole Chapter

### Treasurer's Report June 26, 2011

	<u>3/1 to 5/31/11</u>	<u>2011 YTD</u>	<u>2011 Budget</u>
<b><u>INCOME</u></b>			
Membership Dues	\$300.00	\$570.00	\$1,600.00
March Seminar - Fri & Sat		\$1,725.00	\$2,000.00
General Meetings (5)	\$173.00	\$1,947.50	\$3,000.00
Lunch			\$1,550.00
New England Traditions Shares			\$500.00
Funding Raising	\$60.00	\$108.00	\$1,200.00
General Meeting Raffles	\$83.00	\$175.00	\$300.00
Yankee Trader		\$195.15	\$600.00
Bank Interest	\$0.62	\$0.62	\$0.00
Newsletter Ads/Showcase	\$10.00	\$60.00	\$0.00
Donations			\$0.00
Workshops/Paint-Ins	\$222.00	\$758.00	\$0.00
<b>Total Income</b>	<b>\$848.62</b>	<b>\$5,539.27</b>	<b>\$10,750.00</b>
<b><u>DISBURSEMENTS</u></b>			
Newsletter copies and postage	\$84.18	\$167.90	\$550.00
March Seminar - Fri & Sat	\$1,951.74	\$1,951.74	\$3,500.00
Room rental - General meetings	\$130.54	\$161.88	\$1,500.00
Room rental - Workshops	\$255.92	\$255.92	\$375.00
Lunch			\$1,550.00
Yankee Trader	\$12.89	\$30.89	\$390.00
Dolly Lancaster Scholarship	\$500.00	\$500.00	\$500.00
SDP Dues & Insurance	\$18.50	\$18.50	\$185.00
NECC Dues			\$200.00
Sunday Program Teacher Fees & Exp	\$122.15	\$197.15	\$850.00
Sunday Program Surfaces & Patterns	\$303.45	\$1,138.45	
Workshop Teacher Fees	\$200.00	\$200.00	\$375.00
Workshop Surfaces & Patterns	\$550.00	\$550.00	
Chapter awards and charms			\$150.00
President Gift			\$50.00
SDP Officer Allowance			\$150.00
Fund Raising			\$150.00
Sunshine		\$25.15	\$50.00
General office costs		\$148.74	\$75.00
Historian			\$75.00
Library			\$75.00
Bereavement & other donations	\$70.00	\$105.00	\$0.00
Bank Fees	\$6.00	\$10.00	\$0.00
Other			\$0.00
<b>Total Disbursements</b>	<b>\$4,205.37</b>	<b>\$5,461.32</b>	<b>\$10,750.00</b>
Beginning Balance 1/1/11		\$12,442.94	
Beginning Balance 3/1/11	\$15,877.64		
Plus Income	\$848.62	\$5,539.27	
Less Disbursements	\$4,205.37	\$5,461.32	
Ending Balance 5/31/11	<b>\$12,520.89</b>	<b>\$12,520.89</b>	
<b>Balances 5/31/11</b>			
Checking	\$7,511.24		
Savings	\$5,009.65		

## **2<sup>nd</sup> Vice President's Report**

I have received some beautiful completed items for the Installation centerpieces. Thank you again to everyone who took pieces to paint.

I do have a few base/stands for the clipboards so if you took a clipboard and did not attend the June meeting, I will bring them again to the September meeting so you can match it to your painted clipboard. If for any reason you can't paint the base/stand, let me know what colors you used in your design by the September meeting, and I will complete it.

It would be great if I can have all the completed address books and clipboards at the September meeting so I can plan the tablescapes.

I hope you all noticed the REVISED "Save the Date" for the Installation and see that we had to change the location of the meeting. It will now be at the **Willowbrook Restaurant in Mendon, MA**. Unfortunately, because of the late change of location I don't have all the information finalized so I don't have the sign-up sheet in this newsletter yet. As soon as everything is finalized we will send out an email and you can sign up for the meeting and afternoon session.

Maria Costantini

## **YHT General Meeting Secretary's Report, June 26 , 2010**

**Meeting called to order at 10:17 a.m.**

**Hospitality** – *Pat Flanagan*. New members and guests were introduced. Raffle and door prizes were awarded.

**Secretary** - *Mary St.Pierre*. Motion made to accept March 20, 2011 minutes made by Melissa Walsh, Seconded by Grace Markauskas. Motion passed.

**President** – *Barbara Rolla*. The September meeting will be at the VFW in Millbury, MA. The September meeting program will be with Grace Markauskas, the March 2012 seminar will be Lynne Andrews, and the March 2013 seminar will be with Bobbie Takashima.

**Second Vice President** – *Maria Costantini*. The Installation meeting will be at The Willowbrook Restaurant in Mendon, MA.

**Treasurer** – *Jean McKay*. Checking - \$7,511.24, Savings -\$5,009.65 with a total of \$12,520.89. The chapter broke even with the Sandy Scales seminar in March.

**Membership Secretary** – *Judy Revelas*. There are currently 89 with 12 new members.

**Newsletter Editor** – *Maryalis Bushee*. Deadline for the newsletter articles is Friday, July 1, 2011. Her email: [mdb01746@msn.com](mailto:mdb01746@msn.com) She would like to add articles from local teachers to the newsletter.

**Newsletter Assistant** - *Chris Watson*. Total cost \$84.18

**Nominating Committee**-*Jo-Anne Naugler, Sylvia Lewis, Grace Markauskas*

Proposed Slate for 2012 - President-Barbara Rolla; First Vice President – Marie Sakellarion; Second Vice President-Maria Constantini; Secretary-Julia Tufano; Treasurer-Jean McKay; Membership Secretary-Judy Revelas; Board members-Bonnie Hebert, Cheryl Krilovich, Lorraine Lee, Ginny Sargent, Kathy Slawsky, Mary St.Pierre, Melissa Walsh and Joan Wilding.

**Standing and Other Committees**

**Angel Boxes**- *Melissa Walsh*. The January meeting will be free; bring a friend. We will be painting on Angel boxes. Forty-eight boxes were delivered in April.

**Community Service** – *Melissa Walsh*. She thanked everyone and asked everyone to please continue to bring in items.

## ***YHT General Meeting Secretary's Report Continued***

**Fundraising** – *Jean McKay*. Lynne Andrews has painted a beautiful game table with two sides to the top. Raffle tickets are available. \$1 for one or \$5 for six tickets. An opportunity for chapter members to donate painted items worth over \$35. Pieces will be chosen and priced by a committee. The donator will receive a percentage of the sale.

**Library** – *Maria Costantini*. Books and patterns were available for members to take.

**Meeting Raffle** - *Barbara Rolla*. Donated by Kathy Slawsky.

**New Product Evaluator** - *Barbara Rolla*. Windsor Newton brush cleaner was introduced.

**Paint for Freedom** – *Kathy Slawsky*. The chapter is obligated to send 5 cards to Wood Items and More. Five cards are for the chapter to give as they wish. Members who have signed out cards, please finish and return.

**Scholarship**- *Judy Revelas*. Melissa Ewing thanked everyone for her scholarship as the winner of the 2010 scholarship award. She brought in some her work for members to view. The 2011 winner is Catrina Machado.

**Show, Share & Tell** - *Grace Markauskas*. Grace requested members to share their work.

**Sunshine**-*Kathy Slawsky*. Cards were sent out to Sue Miller for the passing of her husband and brother. A \$35 donation was made to the American Heart Association, a card was also sent to Julia Tufano for the loss of her partner and dear friend. A donation of \$35 was made to St. Joseph's Abbey.

**Webmaster**- *Mary St.Pierre*. Webpage updated.

**Workshops & Paint-Ins** - *Jean McKay*. At the September meeting, there will be voting for workshops. Mediums and pricing must listed with each piece.

A motion to raise the teacher fee for workshops from \$100 to \$125 was made by JoAnne Naugler and seconded by Pat Flanagan. Motion passed.

**Yankee Trader** - *Pam Aucoin*. Fran Rutkowski ran the Yankee Trader with 25% off all items.

### **Special Committees and Positions**

#### ***New England Chapters Council (NECC)/New England Traditions (NET)***

**NECC Rep.**, *Mary St.Pierre*. Meetings of March 24 and June 5, 2011

Postcards were sent to former attendees of NET. Teachers and chapters participating in NET can advertise at the TED (traveling educational display) for free. The 2012 theme will be Painted Treasures. Assistant chair and assistant treasurer are still needed. Shout Out cards are doing well. Country store items can have some of the catalogue logo on them. Check with the Country store chair to ensure no repeats of items. Please be sure tags are secure on country store items. 157 rooms are booked with a free breakfast buffet. Expedia has cheaper rooms but does not include breakfast buffet. There are 35 vendors signed up with 54 committed. There were 315 catalogues sent out. There are over 350 people registered with one from Japan. SDP has increased their dues by \$10. Some chapters are lowering their dues by \$5; members are sending letters to SDP with their thoughts on the increase. If any chapter pulls out of SDP any remaining money has to be given to SDP. To rejoin SDP there is a joining fee. Any chapter participating in NET must be a member of SDP in good standing. Informational letters regarding NET being sent to all New York chapters.

**Ads & Patrons** - *Judy Revelas*. Shout Outs will be placed in the free brochure to all attendees for NET.

**Old Business** - Kathy Slawsky would like to step down from the Crochet squares position. The squares were being unused at Common Threads in CA. Another group took the squares and finished the blankets. The suggestion of continuing the squares for the local tornado victims or discontinuing the program was mentioned.

**New Business** The Jo Sonja painting was offered to SDP. They have not replied to the offer. Discussion followed of the chapter owning the piece and should we try selling it at the Country Store at NET, offer it to a local museum and to have an appraisal done of the painting.

**CALLING FOR SUBMISSIONS FOR THE  
2012 WORKSHOP SERIES**

At the September 2011 General Meeting, the membership will be voting for the 3 workshops to be held in 2012. I'm encouraging all teachers and folks who think that they might like to teach to submit a project for the memberships' votes.

At the June meeting, we voted to increase the teaching fee and teachers will receive a \$125 fee plus being paid retail prices for pattern packets and surfaces directly by the students. In addition, teachers may sell supplies, other patterns, books, CD's, supplies, etc. at the workshop.

Designs need not be original. However, if not original, the designer must have given you permission to use the pattern and teach the class. Plan on 5 to 6 hour projects.

In addition to noting the medium/s used and blocking out your signature on the project, please indicate to me the cost of the surface, packet and supplies so that the members have that info when they vote.

It would be great to see lots of different media – oil, acrylic, colored pencil and watercolor – to get the members excited about voting.

If you want to submit a project, but can't attend that meeting, let me know and I'll make an arrangement to have your piece displayed there. Any questions, e-mail to [jmckay1210@charter.net](mailto:jmckay1210@charter.net) or call 508-883-0886.

See you in September.

Jean McKay

**Recipe Corner**

I want to apologize to those who sent me recipes last time. I have had major computer problems over the last two months and lost all the emails with the recipes.

Please resend them and the recipe corner will resume next newsletter.

Thanks.

Maryalis Bushee

## A New Take on YHT Fund Raising for 2011 You can make some \$\$\$!

We would like to try something new this year to stimulate interest for members and for shoppers. We invite everyone to participate and to earn some income for themselves as well as for the Chapter. Each member could submit up to 5 finished pieces of significant value (\$35 or more) for sale at the New England Traditions Country Store and any other venue at which we decide to try selling. Members would receive 55% to 75%\* of the revenue from each piece sold.

We will collect your donations at the September 2011 general meeting or at a mutually convenient alternate place. The donating member will be asked to indicate her idea of the potential price of the piece (and minimum acceptable price, if so desired). However, the final decision as to price and acceptance for the program will be determined by a committee set up for that purpose. Unsold and unused items will be returned to the members who donated them.

Other Chapters have had success with this kind of program and we feel that it's time to try something new. We welcome both framed art and practical art, of both holiday and general subjects.

We still want your donations of less expensive items for sale as well. Those will not however be part of the commission program. As you know, these things sell well too.

For more information, please contact me at [jmckay1210@charter.net](mailto:jmckay1210@charter.net) or 508-883-0886. Jean McKay

- For New England Traditions, the revenue to the member
- For other venues, such as craft fairs, the member would earn nearly 75% -- with YHT taking 25% plus a fee to cover the table cost (say @ \$5 per item).

Jean MacKay

### Upcoming Newsletters

What would you like to see in your upcoming newsletters? Is there a particular style you are interested in, a special teacher, a new technique? What interests you?

Starting with the next newsletter, we will have a guest artist each issue. Bonnie Frederico is our September artist. She will be writing on colored pencil techniques. In November, Lynne Andrews has volunteered to do an article on acrylics.

Is there someone out there that does watercolor pencils, pastels, watercolors, pen and ink, or watercolor batiks? Does anyone teach in Genesis, Traditions, Jo Sonya gouache that would like to be our featured artist? Email me at [mdb01746@msn.com](mailto:mdb01746@msn.com).

Thanks,  
Maryalis Bushee

## YHT Chapter Happenings

### Community Service –Melissa Walsh

#### **Community Service**

I'd like to thank YHT members for your continued support of UMass Memorial's Comfort Bag Program. The Children's Center at UMass is continuing to accept donations of blankets, journals, and toiletries. Donations from our June 26<sup>th</sup> meeting helped to replenish depleted supplies and were greatly appreciated. Pat Vanasse, LICSW stated, "you guys are the greatest, you bring things in just when we need them!"

Please feel free to contact me with any questions at walsh.mh@gmail.com

Thank you,  
Melissa Walsh

#### **Angel Box Program:**

Forty-eight Angel Boxes were delivered to Women and Infants in Rhode Island on 4/14/11. Reverend Caroline Patterson was appreciative of the Angel Box donations and our continued support of their families. There are only two meetings remaining before the drawing for this year's Angel Box Raffle which will be held at our November Installation Meeting on 11/21/11. Don't miss out on your chance to win! For each box you paint, you will earn a raffle ticket. The more you paint, the greater your chances of winning!

At our meeting in January, we will be painting Angel Boxes during the afternoon program. Participation will be free to YHT members and their guest. What a fun way to share your passion for painting with a friend, while encouraging membership and supporting a great cause at the same time. Save the date, bring a friend and plan to join us!

Thank you for your continued support of this program. Please feel free to contact me at walsh.mh@gmail.com with any questions or ideas.

Melissa Walsh

### **Library**

I brought in 2 more boxes of books and 2 binders of pattern packets from the YHT Library. I have received some positive feedback from members who have found books by artists that they cannot find in stores. I will have more for the September meeting.

There are still a lot of books and patterns people have not taken. If anyone knows of an organization, nursing home, senior center, etc. or has a suggestion of what to do with the unwanted books and patterns please let me know. I would hate to just throw them away.

I also have many Pendaflex hangers that were in the file cabinets, they are the standard green color. If you would like some, let me know and I will bring them to the September meeting.

Maria Costantini



### Y HT Yankee Trader Store

The YHT Yankee Trader Store will be closing in 2011. The remainder of items will be on sale for members starting at the January meeting.

Remember to bring your unused Yankee Bucks and extra money to partake in this closing sale.

There are still 3 sweatshirts remaining for sale along with many painting supplies.

Come shop and enjoy the bargains.

Maria Costantini

## ***PAINTING TIP—From Peggy Stogdill, MDA***

### **YUKKY BRUSHES**



Reprinted with the permission of  
Peggy Stogdill

If someone sends you flowers, and they come with their stems inserted in those nifty water tubes, here's a great tip for those times when you forget to clean your brushes (I know, you'd never do that, but I sure have):

Pour an inch or so of Murphy's Oil Soap into the tubes. Thread the brush handle through the hole in the tube lids, then suspend the hard-as-a-rock bristles in the soap. Don't let the bristles touch the bottom of the tubes and make sure the top of the metal ferrule is above the soap. The tops of the tubes will grip the brush handles tightly. Prop the tubes up in a container and let the brushes soak overnight. Next day, clean as you normally would, and voila!--the brushes are as good as new.

If you don't want to wait for someone to send you flowers, check out Cheap Joe's Art Supplies. They have something called Brush Tubz that will do the trick.

**This is a new feature we are adding to the newsletter this month.**

Do you have a painting tip you would like to share? A new product that you have found that is now an essential part of your painting kit?

Please send it to me at [mdb01746@msn.com](mailto:mdb01746@msn.com) and we will put it in the newsletter to share with chapter members.

# **News From National**

**By**

**Mary McLean, CDA**

**The 39<sup>th</sup> Annual International Society of Decorative Painters Conference and Expo took place on May 16-21, 2011 in Wichita, Kansas. For those who attended this convention, it was a wonderful experience to meet old friends and mingle with others who love to paint.**

**The theme of the convention was Sunflowers. The convention artist was Mary Jo Leisure who painted a lovely piece that was reproduced as giclee prints. She autographed each one and thoroughly enjoyed each sunflower moment. The Kansas state flower is the Sunflower. Next year, the convention artist will be Sherry Nelson. I am eagerly looking forward to celebrating the 40<sup>th</sup> Ruby anniversary of SDP and to the beautiful painting that Sherry will do to commemorate the event.**

**The week began with an opening night party entitled, Flower Power. They were everywhere. Ahhh, yes, we traveled back to the sixties, dressing the part and enjoying the music. Tie dye and psychedelic colors were the theme for the night. There were many contests and prizes awarded for the best costumes and dancers. It all just seemed like yesterday.**

**On Tuesday, we saw the gallery exhibits at the SDP headquarters. There was a special display of 25 Sunflower paintings done by Master Decorative Artists. Also, there was a special event opening of the Joan Johnson gallery, a grouping of donated pieces given from the Johnson family. It was very special to see her roses in person.**

**Wednesday was the annual meeting. It was a very serious time to consider the raising of dues by ten dollars. Declining membership and rising expenses seemed to be the culprits. After careful consideration, the assembly voted to pass the raise. The Board of Directors have cut and tried to economize wherever possible. It certainly is a wake up call to try to individually, bring new members into the organization.**

**At the end of the meeting, the certification results were announced. That is always an exciting event. Immediately after the meeting, members rush to the display to view the passing entries. The display are very near to the Expo entrance, making it a very easy to get there. Later that evening, the Expo opened to an eager registered clientel. What fun to roam the aisles, looking at all the magic displays. I particularly loved DecoArt booth, as they launched a new program to do quick paintings. Check out their web site concerning for Social Art Working. It could be one of the answers for the future.**

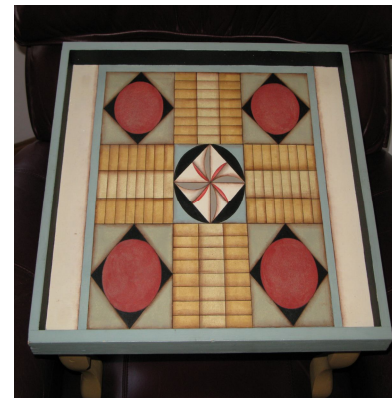
**The banquet on Friday ends the week of celebration. Everyone was eager to see all the beautiful table displays. Again, prizes were awarded for the best designs. It is so inspiring to see all the painted table settings. No one arrives late, as they want to choose just the right place to sit.**

**Somewhere in between, we fit in classes, trips to expo floor, five o'clock cocktail times, and meet and greet people we never thought we would meet and will not forget. Very special plans for next year! Stay tuned and check the SDP web site for upcoming details.**

ANNOUNCING OUR 2011 YEAR LONG RAFFLE  
DESIGNED AND PAINTED BY LYNNE ANDREWS  
GOVERNOR'S HOUSE GAME TABLE

DRAWING WILL BE HELD AT THE 2011 INSTALLATION MEETING  
NOVEMBER 20, 2011, YOU NEED NOT BE PRESENT TO WIN

TICKETS ARE \$1 EACH OR 6 FOR \$5 AVAILABLE FROM JEAN MCKAY  
e-mail: [jmckay1210@charter.net](mailto:jmckay1210@charter.net)  
phone 508-883-0886  
or by mail request to 29F Cork Circle, Millville, MA 01529



DESIGNED AND PAINTED BY LYNNE ANDREWS  
GOVERNOR'S HOUSE GAME TABLE

DRAWING WILL BE HELD AT THE 2011 INSTALLATION MEETING  
NOVEMBER 20, 2011, YOU NEED NOT BE PRESENT TO WIN

TICKETS ARE \$1 EACH OR 6 FOR \$5 AVAILABLE FROM JEAN MCKAY  
e-mail: [jmckay1210@charter.net](mailto:jmckay1210@charter.net)  
phone 508-883-0886  
or by mail request to 29F Cork Circle, Millville, MA 01529

## NET NEWS

### New England Traditions – ADS and PATRONS

One of our responsibilities this year as YHT members of NECC/NET (New England Chapters Council and the New England Traditions Convention) is to contact teachers, exhibitors, vendors, and local businesses to sell ads in our Program Book. Every person who registers to attend NET will receive a Program Book. It is a good source of information for attendees.

**I need HELP!** Right now I am a committee of two. Thank you, Maria Costantini. If you could give me a couple of hours to make some sales calls, I really would appreciate it. If you have any ideas on sales please call or email me. We need to do a good job on this to help with convention costs and support our president, Grace Markauskas.

A fun idea I had for the book was a “Shout Out” page. Maria put together a form and it is on the NET and YHT websites. Please take a look at it. We thought it would be fun to read the shout outs and support NET, our friends, convention officers, vendors, teachers, etc. I’d like feedback if you like the idea. We thought \$10 would be a reasonable cost for the shout out. Maria, Lorainne, and I are splitting the cost of ours which amounts to a little more than \$3 a piece.

**Finally, please consider helping me for a couple of hours. If you have any ideas, they are most welcomed.**

Judy Revelas,  
Ads and Patrons Chair for NECC/NET  
jrevelas@comcast.net or 978-658-3158

## *New England Chapters Council - Sister Chapters*

### **Chapter**

### **Contact**

Brushes of Western CT

jwillteach@sbcglobal.net

Capitolers

teacherbrown@worldnet.att.net

Ct Society of Decorative Painters

elainedumas@earthlink.net

CT Yankee Painters

psweet277@aol.com

Little Rhoddy Rembrandts

jmpag9@aol.com

Sea Strokes of Maine

mary@frambach@msn.com

Tole n’ Me Main

paintingbug@msn.com

White Mountain Dec.Ptr.Guild N. H .

president@wmdpghn.org

Yankee Heritage Tole MA

brolla@verizon.net

## Yankee Heritage Tole

Presents an afternoon program with Grace Markauskas  
(Shara Reiner inspired design)

Time: 1—5 p.m.

Place: VFW Hall  
16 South Main Street  
Millbury MA

Directions From the west take Exit 10A off the Massachusetts Turnpike (Route 90). From the east, take exit 10B off the Massachusetts Turnpike (Route 90). Turn right onto the Route 20 Connector. Take the ramp right for Route 146 South Worcester Providence Turnpike toward Providence Millbury. At exit 8 take ramp right toward Millbury. Turn left onto Elm Street. Turn right onto School Street. Arrive at the VFW, 16 S Main St, Millbury, MA 01527-3114.

This project is painted with acrylics on canvas and has a wooden header that can be personalized. The finished size is approximately 11 x 18. Please bring your regular painting supplies. See the Fall Thyme information and material sheet available from Barbara Rolla at 413-967-5444 or email at [brolla@comcast.net](mailto:brolla@comcast.net).



Keep Top Portion

---

### Afternoon program with Grace Markauskas on September 18, 2011

Please return this form if you plan to attend the meeting whether or not you will be painting.

Name \_\_\_\_\_ Email \_\_\_\_\_

Address \_\_\_\_\_ Phone \_\_\_\_\_

I \_\_\_ will \_\_\_ will not attend the general meeting at 10 a.m.

I \_\_\_ will \_\_\_ will not attend the afternoon program with Grace

No of guests \_\_\_ attending the meeting. Write the names of your guests on the back of this sheet.

I am enclosing \$10 for each person attending the afternoon program \$ \_\_\_\_\_

I am enclosing \$10 for each project surface (non-fray canvas) \$ \_\_\_\_\_

TOTAL: \$ \_\_\_\_\_

Make checks payable to YHT and send to Barbara Rolla at 4 Woodland Heights, Ware, MA 01082

# November Installation Meeting and Afternoon Program

November 20, 2011

**SAVE THE DATE** and note the **CHANGE IN LOCATION**

YANKEE HERITAGE TOLE  
CHAPTER  
November Installation  
'Let's be Thankful'  
November 20, 2011  
Time: 10 a.m. to 5 p.m.  
Willowbrook Restaurant  
Mendon, MA



We are pleased to offer this afternoon program with Maria Costantini. It is an adorable design by *Peggy Harris* titled "Mayflower Mice" which will be painted with acrylic paints on RocLon. The finished piece can be fitted with a dowel and is suitable for hanging on your door or in your home.

**Because of the unexpected change in location, the final cost of the Installation has not been calculated. When the plans have been finalized we will send out an email with the sign-up sheet attached and it will also be in the next newsletter. Thank you for your patience and understanding during this transition.**

**The Willowbrook Restaurant is in Mendon MA and has plenty of off street parking. When the meeting begins at 10am we will have our installation ceremony and a short general meeting followed by a buffet luncheon. At 1pm we will spend an enjoyable afternoon painting this great design by Peggy Harris. I hope to see you all there.**

Maria Costantini

**NEW ENGLAND TRADITIONS 2011  
"SHOUT-OUT" APPLICATION**

**Send a message of friendship or encouragement to your Decorative Painting friends by purchasing a "Shout-Out" which will be placed in the 2011 NET Program book. Deadline for submission into the Program book is: August 20, 2011.**

The "Shout-Out" ads will be 2.0"h x 3.5"w (business card size) for \$10.00 each.

Name \_\_\_\_\_

Address \_\_\_\_\_

Telephone \_\_\_\_\_ Email \_\_\_\_\_

- I would like to place a "Shout-Out" in the 2011 NET Program book.**

Write your message in the box below and mail this form to the address below and we will format it for you in a nice font.


2.0"h x 3.5"w  
Business Card Size

If you have a "Shout-out" designed in the exact size and saved as a .pdf you can attach it to an email and send to Judy Revelas at [jrevelas@comcast.net](mailto:jrevelas@comcast.net). Be sure to mail us your check for \$10.00 along with this form to the address below.

- I have placed my "Shout-Out in the box below, please format it for me.**
- I have attached my "Shout-Out" as a .pdf**
- My check, made out to "New England Traditions" is enclosed.**

**Mail these forms to:** Judy Revelas, 29 Grace Drive, Wilmington, MA 01887  
If you have any questions, you can call Judy at 978-658-3158

## Teacher's Showcase



**Lynne  
Andrews  
Folk Art**

Artist/Designer/Author  
Travel Teacher

181 Tourtellot Hill Rd.  
Chepachet, RI 02814  
401-568-7951  
andrews181@cox.net  
www.lynneandrews.com

*Maureen J Baker*

Artist Designer Teacher  
[www.tolebym.com](http://www.tolebym.com) website  
[maureenjbaker@msn.com](mailto:maureenjbaker@msn.com) email  
978 256 5949 phone  
Classes · Commissions · Seminars



*Christine A. Watson*

30 Kempton Street  
Millville, MA 01529  
508-876-1122

*Weekly Classes & Workshops*

*Handpainted from the Heart*  
[handpaintedheart@hotmail.com](mailto:handpaintedheart@hotmail.com)

**Your ad could be here  
in the next issue of the  
Yankee Tole Chapter  
Newsletter.**

*Mary McLean Art Studio*

*Original Designs ★ Classes ★ Seminars*

Mary McLean, CDA, BFA, M.Ed  
8 Sharon Avenue  
Norfolk, MA 02056  
(p) 508-384-7191  
[mcleanmdl@aol.com](mailto:mcleanmdl@aol.com)



Decorative Artist, Teacher and Designer

*Tole Sampler*

Mary Svenson, CDA

E-mail: [tolesampler@comcast.net](mailto:tolesampler@comcast.net)  
[www.tolesampler.com](http://www.tolesampler.com)

978-692-3261  
24 Buckboard Drive  
Westford, MA 01886



**Barbara Rolla**  
**Timeless Treasures**

4 Woodland Heights  
Ware, MA 01082  
413-967-5444

[brolla@verizon.net](mailto:brolla@verizon.net)  
supplieswood cutting-decorative painting



*Linda's Daydreams*

*Decorative Arts Studio  
and Retail Shop*

*Linda McClure*  
860-875-2341  
860-872-7478 (home)  
[mccclurel@aol.com](mailto:mccclurel@aol.com)

630 Talcottville Rd.  
Unit 4  
Vernon, CT 06066

*Adult Painting Classes for all skill levels*

# Society of Decorative Painters Membership Form



## Society of Decorative Painters

### 2011 MEMBERSHIP FORM

**1 MEMBER PROFILE** Please print name and address as it should appear on the mailing label.

Name \_\_\_\_\_ Membership no. (if renewal) \_\_\_\_\_  
 \*Household Member Name (if purchasing a Household Membership) \_\_\_\_\_ Membership no. (if renewal) \_\_\_\_\_  
 Business Name (if joining as a Business Member) \_\_\_\_\_  
 Mailing Address \_\_\_\_\_ City \_\_\_\_\_  
 State/Prov \_\_\_\_\_ ZIP/Postal Code \_\_\_\_\_ Country \_\_\_\_\_  
 Email \_\_\_\_\_ Website \_\_\_\_\_  
 (Get the most from your SDP membership. Share your email address with us!)

Phone ( ) \_\_\_\_\_ Fax ( ) \_\_\_\_\_

I am a member of at least one SDP chapter. Yes  No   
 (For information on chapters in your area, please call 316-269-9300 ext. 107 or visit our website at WWW.DECORATIVEPAINTERS.ORG.)

I would like to give  \$2,  \$5,  \$10, or \$ \_\_\_\_\_ to the SDP Foundation, which provides scholarships to members and supports other SDP initiatives.

**2 MEMBERSHIP CATEGORIES [CHECK APPROPRIATE BOX(ES)]**

Mark this box if you wish to pay for 2012 membership also.

**U.S.**

- \$40 Individual (\$45 after 12/1/10)  
 \$70 Business (\$75 after 12/1/10)

**ANY COUNTRY (U.S. FUNDS)**

- \$20 Household\*

Household Membership is for an additional member sharing the same address as an Individual or Business member. If selecting this option, no printed Decorative Painter magazine will be mailed to you.

**INTERNATIONAL & CANADA (U.S. FUNDS)**

- \$70 Individual (\$75 after 12/1/10)  
 \$40 Online Individual\*\*  
 \$100 Business (\$105 after 12/1/10)  
 \$70 Online Business\*\*

The higher international rate reflects postage costs, not an increase in dues.

\*\* Online memberships: You will receive the magazine online only. If selecting this option, no printed Decorative Painter magazine will be mailed to you.

**IMPORTANT**

Membership year is Jan. 1. to Dec. 31, 2011. If you join at any month of the year you will receive the back issues and get all the benefits for the rest of the year. Dues postmarked after Dec. 1, 2010, require an additional \$5 late fee. This does not apply to new members or those who didn't renew in the past two years (2009 and 2010).

**3 BUSINESS & TEACHER DIRECTORY 2011 RESOURCE CATEGORIES (OPTIONAL)**

**BUSINESS MEMBERS ONLY**

Business Members, check all boxes that apply for the 2011 Business & Teacher Directory. Listings and B&T Directory are free with your business membership. Visit SDP's website, www.decorativepainters.org, to submit a fifty-word description of your business and to submit the categories associated with your business. These categories and descriptions will be added only to the B&T Directory Online Resource. You must join or renew by Dec. 1, 2010, in order to be listed in the printed version of the 2011 Business & Teacher Directory. Those who join or renew after Dec. 1, 2010 will be added to the B&T Directory Online Resource only.

- Author  
 Distributor/Wholesaler  
 Home Studio  
 Manufacturer/Importer  
 Publisher  
 Retailer  
 Teacher  
 Travel-teacher  
 Other

**(OPTIONAL)**

**INDIVIDUAL MEMBERS ONLY**

Individual Members, check all boxes that apply. Listings are \$10 each per year.

- Author  
 Teacher  
 Travel-teacher  
 Design and/or painting skills for hire

The 2011 Business & Teacher Directory will be available for sale in spring of 2011.

**4 BUSINESS & TEACHER DIRECTORY PREORDER (OPTIONAL)** Check the appropriate box to preorder your copy.

- Free for Business Members (all countries)  
 \$12 • Directory price for U.S. Members  
 \$20 • Directory price for International Members (U.S. funds)

To be included (based on the categories you checked above), you must renew your membership by Dec. 1, 2010. Copies will be mailed in spring 2011.

**5 PAYMENT**

Make checks payable to: SDP, 393 N. McLean Blvd., Wichita, KS 67203-5968. • For faster service, use MasterCard or VISA and call (316) 269-9300 ext. 105, or fax application to (316) 269-9191 • Join online at WWW.DECORATIVEPAINTERS.ORG.

Note: SDP serves its members by providing information and communications via email. These communications include, but are not limited to, e-zines such as Chapter Happenings newsletter, informational e-blasts, and notification of contests and promotions from SDP business members. If you would prefer not to receive newsletters and other communications, please do not provide your email address.

Total \_\_\_\_\_

VISA  MasterCard Exp. date \_\_\_\_\_ Phone \_\_\_\_\_  
 Card number \_\_\_\_\_ Signature \_\_\_\_\_  
 Yes! This is a Gift Membership from \_\_\_\_\_ Memb. no. \_\_\_\_\_

**DUES POSTMARKED AFTER DEC. 1, 2010, REQUIRE AN ADDITIONAL \$5 LATE FEE.  
 (DOES NOT APPLY TO NEW MEMBERS OR THOSE WHO DIDN'T RENEW IN THE PAST TWO YEARS.)**

Thank you for supporting the Society of Decorative Painters.  
 Your membership card will arrive with issue 1, 2011, the last week in February.

## Yankee Heritage Tole Chapter Membership Form

Name: \_\_\_\_\_ SDP Membership #: \_\_\_\_\_  
Street \_\_\_\_\_  
City \_\_\_\_\_

State \_\_\_\_\_ Zip \_\_\_\_\_ Home phone \_\_\_\_\_ Business phone \_\_\_\_\_

e-mail address \_\_\_\_\_

Circle **All** that apply:    New Member            Renewal            Shop Owner            Teacher            Student

Referred to YHT by \_\_\_\_\_  
(name of YHT member)

Do you want your address and phone to be listed in the YHT Directory:    \_\_\_yes    \_\_\_no

If you want to have your shop listed, please fill in the following:

Shop Name: \_\_\_\_\_

Address: \_\_\_\_\_

**I would like to receive my newsletter as follows, check one:**

**By hard copy via US postal service** \_\_\_\_\_

**By e-mail notification that the newsletter is available on YHT's website** \_\_\_\_\_

**Annual Membership Dues: \$20.00**

Send this form and a **check payable to YHT** to:

**Judy Revelas 29 Grace Drive Wilmington, MA 01887**

**NOTE: You must be a member of SDP to become a member of Yankee Heritage Tole Chapter. Please send SDP dues directly to SDP's National Office. You may be required to show your SDP membership card and/or your YHT membership card at YHT events and program.**

### VISIT YHT's WEBSITE

Go to [www.yankeehheritagetolechapter.com](http://www.yankeehheritagetolechapter.com) and find out what's happening. There are color photos of all our upcoming workshops and seminars. See photos of past happenings. Do you have some great digital photos of YHT events? Send them to our webmaster, Mary St. Pierre at [nasi@net1plus.com](mailto:nasi@net1plus.com).

### Decorative Arts Collection

In the past they have printed many wonderful books but the book of Painted Quilts beats them all. These hand painted quilts and companion pieces are to die for. Call 404-627-3662 or click [www.decorativeartscollection.org](http://www.decorativeartscollection.org) to place your order. You get 1 incredible book, 1 bonus CD of full size patterns you can paint, plus color images which can be printed on fabric on your home printer!, by talented artists (Trudy Beard, Peggy Stogdill, Jamie Mills-Price, Donna Dewberry, Bobbie Takashima, Judy Diephouse and Lynn Deptula, Mary Wiseman, Jo Sonja Jansen, Andy Jones, Sherry Nelson, Peggy Harris, Ronnie Bringle, Cynthia Erikson and Chris Thornton-Deason—28 amazing projects (including non-fabric surfaces) for only \$24.95 plus shipping and handling. While you're at it support this wonderful group by becoming a Friend of the DAC.

### Newsletter Information

The *Yankee Tole Crier* is published 5 times a year. **The newsletter deadline is 12:00 noon the Friday following the General Meeting.** The newsletter will be placed together **THAT** Saturday. All material is to be emailed and/or submitted on diskette with a hard copy of the report. Photos should be of quality that they can be copied for clarity of a copy from the copy of the original photo. Any problems with the printing and mailing of the newsletter should be directed to Newsletter Editorial Assistant Chris Watson. She can be contacted via email: [handpaintedheart@hotmail.com](mailto:handpaintedheart@hotmail.com).

Maryalis Bushee, Editor, Yankee Tole Crier  
[mdb01746@msn.com](mailto:mdb01746@msn.com)

**Directions to our meeting...**

From the west take Exit 10A off the Massachusetts Turnpike (Route 90). From the east, take exit 10B off the Massachusetts Turnpike (Route 90) Then, Turn right onto the Route 20 Connector. Take the ramp right for Route 146 South Worcester Providence Turnpike toward Providence Millbury. At exit 8 take ramp right toward Millbury. Turn left onto Elm Street. Turn right onto School Street. Arrive at the VFW, 16 S Main St, Millbury, MA 01527-3114.

**Things to bring to the meeting...**

1. \$\$ for shopping at the **Yankee Trader SALE**
2. Ads Reports and information for the Newsletter
3. Community Service Project
4. Donate a door prize for a future meeting
5. Guest(s) to introduce to YHT
6. Items for Show, Share and Tell
7. Local Papers for Publicity
8. Painted name tags
9. Regular painting supplies for the Sunday afternoon Program
10. \$\$ **Library inventory SALE**
11. **Membership renewal form**

Maryalis Bushee  
YHT Newsletter Editor  
48 Wilson Street  
Holliston, MA 01746

